

CENTRAL BANK OF THE REPUBLIC OF TURKEY



BUSINESS TENDENCY SURVEY

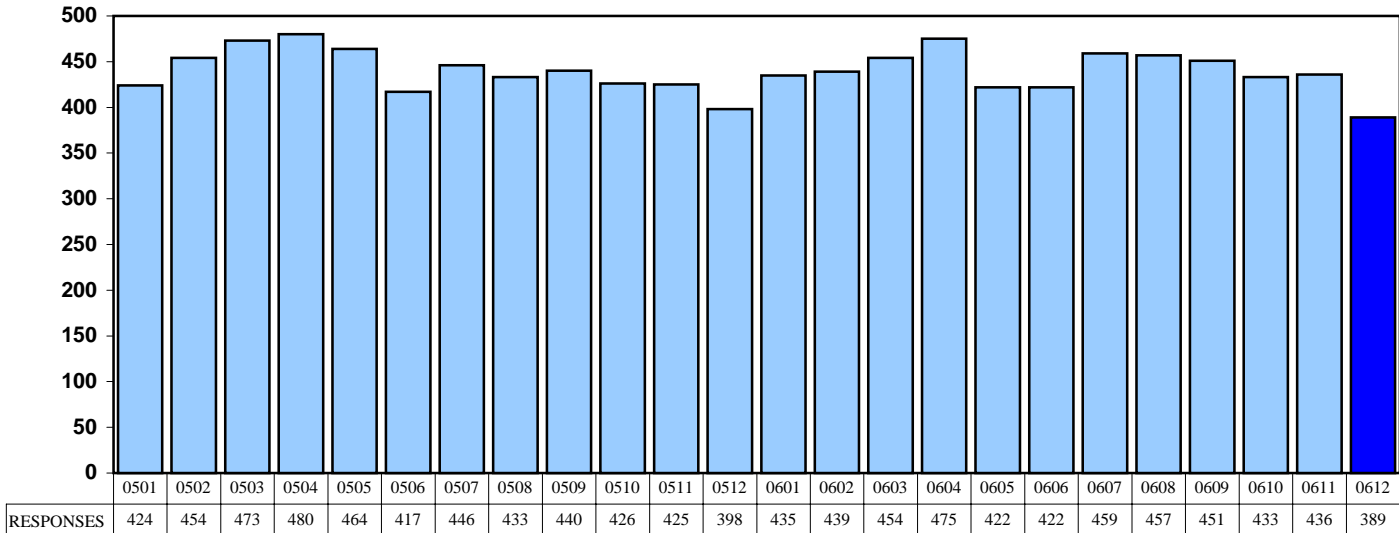
DECEMBER 2006

10 JANUARY 2007

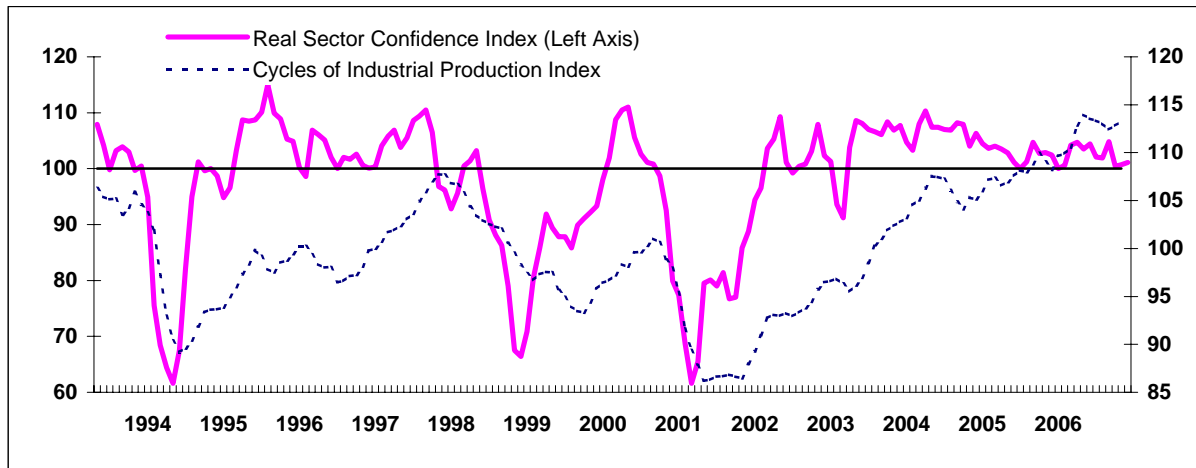
CONTENTS

QUESTIONS	PAGE NUMBER
Monthly Responses	3
Real Sector Confidence Index	4-5
1 Your opinion about the general course of business in your industry, compared with previous month	6
2 Your opinion about export prospects over the next three months compared with previous month	7
3 How much investment expenditure do you expect to realise over the next twelve months	8
4 Your capacity utilization compared with previous month	9
5 What is the level of your productive capacity in accordance with your expectations on demand for the next twelve months	10
6 What is the level of your sales revenues compared with previous month	11
7 What is the level of your past-due receivables compared with previous month	12
8 What is the finance requirement of your firm for the next month compared with previous month	13
 EXCLUDING SEASONAL VARIATIONS	
9 Total amount of orders received this month	14
10 Amount of export orders received this month	15
11 Amount of monthly stocks of finished goods this month	16
 EXCLUDING SEASONAL VARIATIONS, WHAT IS THE LAST THREE MONTHS' TREND AND WHAT WILL BE THE NEXT THREE MONTHS' TREND FOR THE FOLLOWING ITEMS?	
12 Total employment	17
13 Amount of new orders received from the domestic market	18
14 Amount of new orders received from the export market	19
15 Volume of output	20
16 Volume of goods sold in the domestic Market	21
17 Volume of exported goods	22
18 Volume of raw-material stocks	23
19 Volume of work in progress	24
20 Stocks of finished goods	25
21 Average unit cost	26
22 Average price for new orders received from the domestic market	27
23 Average price for new export orders	28
24 According to your existing orders received or production plan, how many months is your production programme	29
25 Over the next quarter, which factor(s) might limit the production, rank according to degree of importance	30
26 Over the next quarter, which factor(s) might limit your export orders, rank according to degree of importance	31
27 Over the next twelve months, what is the main reason for the planned expenditures on building, plant or equipment, rank according to degree of importance	32
28 Which factor(s) might limit the realization of these expenditures on building, plant or equipment, rank according to degree of importance	33
29 Over the next three months, what is your expectation for inflation (producer prices) rate	34
30 Over the next twelve months, what is your expectation for inflation (producer prices) rate descriptive statistics	35
31 What is your expectation for year-end inflation (producer prices) rate descriptive statistics	36
32 Over the next three months, what is your expectation for short term Turkish Lira credit interest rate	37
33 Over the next three months, what is your expectation for short term Turkish Lira credit interest rate descriptive statistics	38
34 Over the next twelve months, what is your expectation for short term Turkish Lira credit interest rate descriptive statistics	39

BUSINESS TENDENCY SURVEY MONTHLY RESPONSES



REAL SECTOR CONFIDENCE INDEX



Components of the Real Sector Confidence Index: BTS question 1 (Your opinion about the general business situation in your industry, compared with previous month), BTS question 2 (Your opinion about export prospects over the next three months compared with previous month), BTS question 3 (How much investment expenditure do you expect to realise over the next twelve months), BTS question 9 (Total amounts of orders received this month), BTS question 11 (Amount of monthly stocks of finished goods this month), BTS question 12 ((Trend of next three months) Total employment), BTS question 15 ((Trend of next three months) Volume of output), BTS question 16 ((Trend of last three months) Volume of goods sold in domestic market), BTS question 18 ((Trend of last three months) Volume of raw-material stocks).

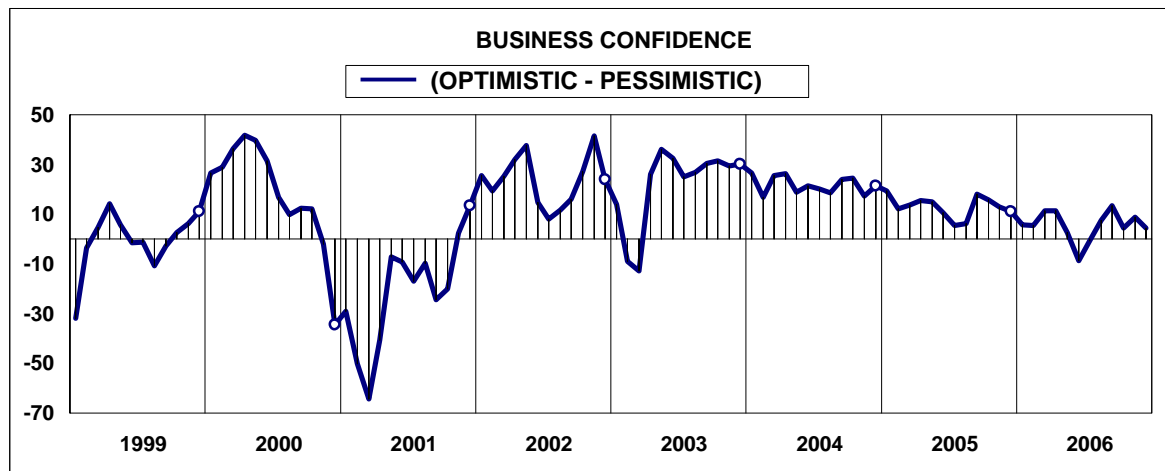
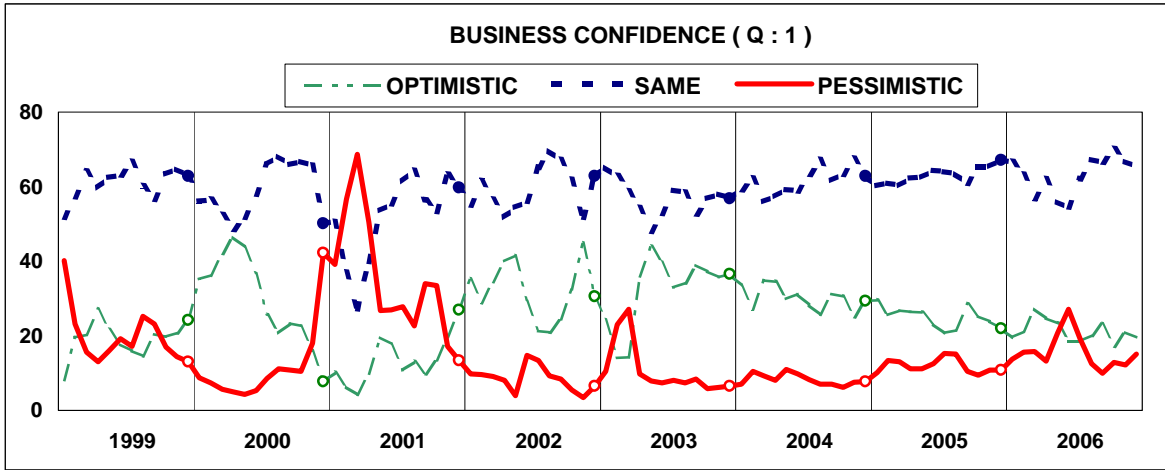


INDEX = 100 : A stable outlook to the economic activity by the real sector agents covered by the Business Tendency Survey.
 INDEX > 100 : An optimistic outlook to the economic activity by the real sector agents covered by the Business Tendency Survey.
 INDEX < 100 : A pessimistic outlook to the economic activity by the real sector agents covered by the Business Tendency Survey.

REAL SECTOR CONFIDENCE INDEX AND COMPONENTS

	(Period of Dec., 1987- December 2006)			2006												
	Arithmetic Mean	Maximum Value	Minimum Value	Dec.	Jan.	Feb.	Mar.	Apr.	May	June	July	Aug.	Sep.	Oct.	Nov.	Dec.
Real Sector Confidence Index	96.4	123.3	61.6	102.4	100.0	100.6	104.2	104.7	103.5	104.4	102.1	101.9	104.8	100.4	100.7	101.1
<i>General business situation</i>	103.0	141.7	35.7	111.1	105.8	105.5	111.5	111.6	102.5	91.4	99.2	107.5	113.4	104.4	108.8	104.4
<i>Exports prospects</i>	110.4	134.2	68.9	112.3	114.8	111.8	115.9	113.3	120.8	126.1	118.5	115.3	116.2	107.4	110.1	112.0
<i>Investment expenditure</i>	84.4	130.5	28.6	105.0	37.4 99.0	95.6	93.6	94.1	91.3	91.9	93.2	90.4	94.7	95.7	93.6	95.2
<i>Total amount of orders</i>	75.4	112.5	32.6	84.6	78.2	83.1	92.1	87.6	90.5	93.5	84.7	83.0	89.4	88.4	88.2	87.5
<i>Amount of stocks of finished goods (*)</i>	91.9	106.3	67.5	94.3	92.1	90.0	92.0	94.3	98.2	99.8	91.1	94.6	98.0	95.2	93.4	95.2
<i>Total employment</i>	95.7	124.7	59.7	103.0	102.3	103.7	104.1	106.6	103.6	105.1	102.2	103.7	102.2	96.6	101.2	101.3
<i>Volume of output</i>	113.0	135.2	72.6	110.5	119.5	125.5	124.5	123.5	116.5	116.0	119.4	114.9	112.5	105.6	105.0	110.2
<i>Volume of goods sold in domestic market</i>	96.2	138.9	38.3	103.9	92.4	95.7	104.1	108.3	112.2	113.6	108.1	101.2	110.9	108.8	104.2	104.3
<i>Volume of raw-material stocks</i>	98.0	108.2	79.9	96.9	95.7	94.6	99.8	102.6	95.6	102.0	102.2	106.7	105.5	101.9	101.9	100.0

(*) When the diffusion index of the amount of stocks of finished goods is calculated, the sign of the responses is reversed. While an increase in the diffusion index points out a decrease in the amount of stocks, a decline in the diffusion index indicates a raise in the amount of stocks.

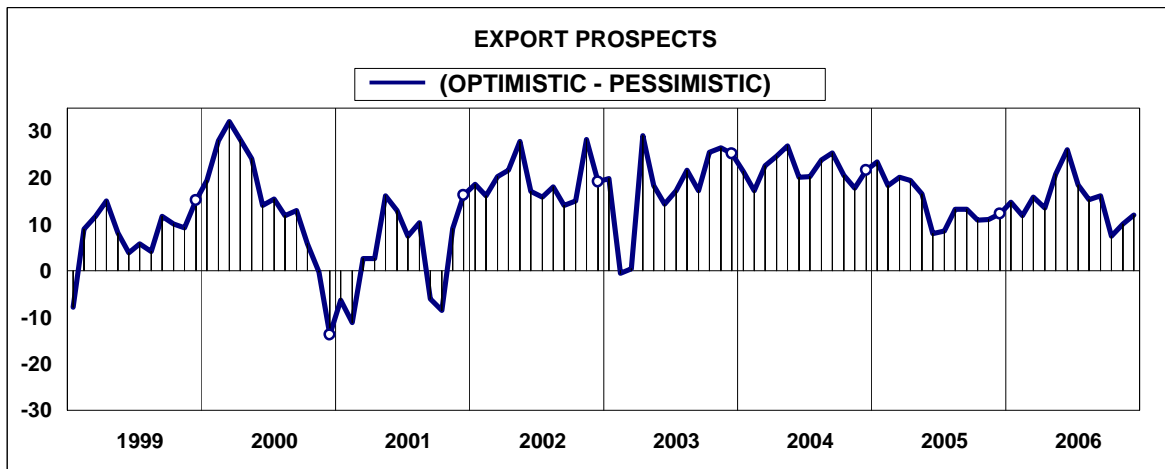
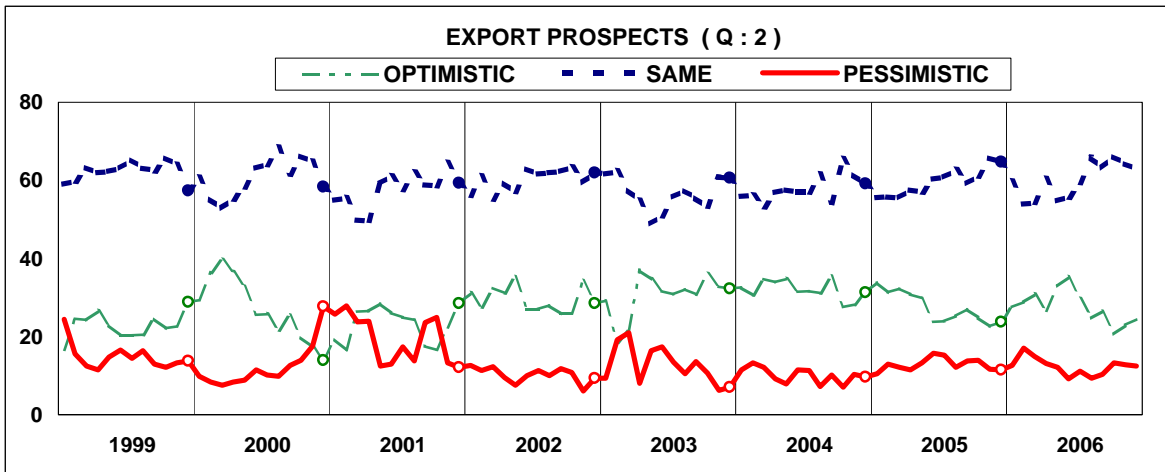


1-Your opinion about the general course of business in your industry, compared with previous month:

(A=MORE OPTIMISTIC, B=SAME, C=MORE PESSIMISTIC)

MONTHS	PERCENT			A-C	MONTHS	PERCENT			A-C
	A	B	C			A	B	C	
0501	29.6	60.2	10.2	19.4	0601	19.6	66.6	13.8	5.8
0502	25.6	61.0	13.4	12.2	0602	21.1	63.3	15.6	5.5
0503	26.8	60.2	13.0	13.8	0603	27.3	56.9	15.8	11.5
0504	26.5	62.4	11.1	15.4	0604	24.8	61.9	13.3	11.5
0505	26.3	62.5	11.2	15.1	0605	23.3	55.9	20.8	2.5
0506	23.1	64.4	12.5	10.6	0606	18.5	54.4	27.1	-8.6
0507	20.7	64.0	15.3	5.4	0607	18.5	62.2	19.3	-8
0508	21.4	63.5	15.1	6.3	0608	20.1	67.3	12.6	7.5
0509	28.5	61.0	10.5	18.0	0609	23.4	66.6	10.0	13.4
0510	25.2	65.4	9.4	15.8	0610	17.2	70.0	12.8	4.4
0511	23.8	65.4	10.8	13.0	0611	21.0	66.8	12.2	8.8
0512	22.0	67.1	10.9	11.1	0612	19.5	65.4	15.1	4.4

Note: "o" sign shows the December data of the related year in the graphs.

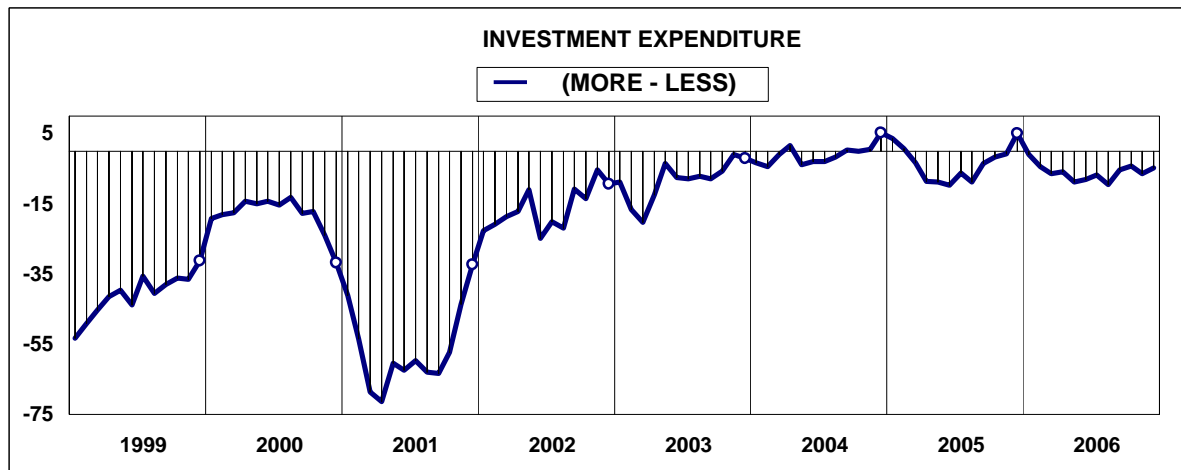
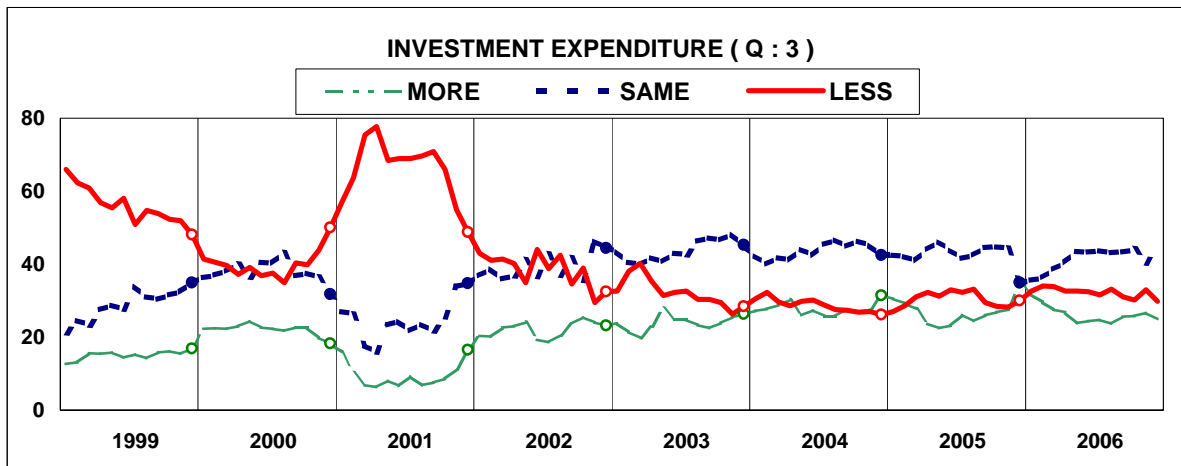


2- Your opinion about export prospects over the next three months compared with previous month:

(A=MORE OPTIMISTIC, B=SAME, C=MORE PESSIMISTIC)

MONTHS	PERCENT			A-C
	A	B	C	
0501	34.0	55.5	10.5	23.5
0502	31.3	55.7	13.0	18.3
0503	32.3	55.5	12.2	20.1
0504	30.9	57.6	11.5	19.4
0505	29.8	57.0	13.2	16.6
0506	23.8	60.4	15.8	8.0
0507	23.9	60.8	15.3	8.6
0508	25.3	62.6	12.1	13.2
0509	27.1	59.1	13.8	13.3
0510	24.9	61.1	14.0	10.9
0511	22.7	65.7	11.6	11.1
0512	23.8	64.7	11.5	12.3

MONTHS	PERCENT			A-C
	A	B	C	
0601	27.5	59.8	12.7	14.8
0602	28.9	54.0	17.1	11.8
0603	30.8	54.3	14.9	15.9
0604	26.6	60.3	13.1	13.5
0605	33.0	54.8	12.2	20.8
0606	35.2	55.7	9.1	26.1
0607	29.6	59.3	11.1	18.5
0608	24.7	65.9	9.4	15.3
0609	26.5	63.2	10.3	16.2
0610	20.7	66.0	13.3	7.4
0611	22.9	64.3	12.8	10.1
0612	24.5	63.0	12.5	12.0

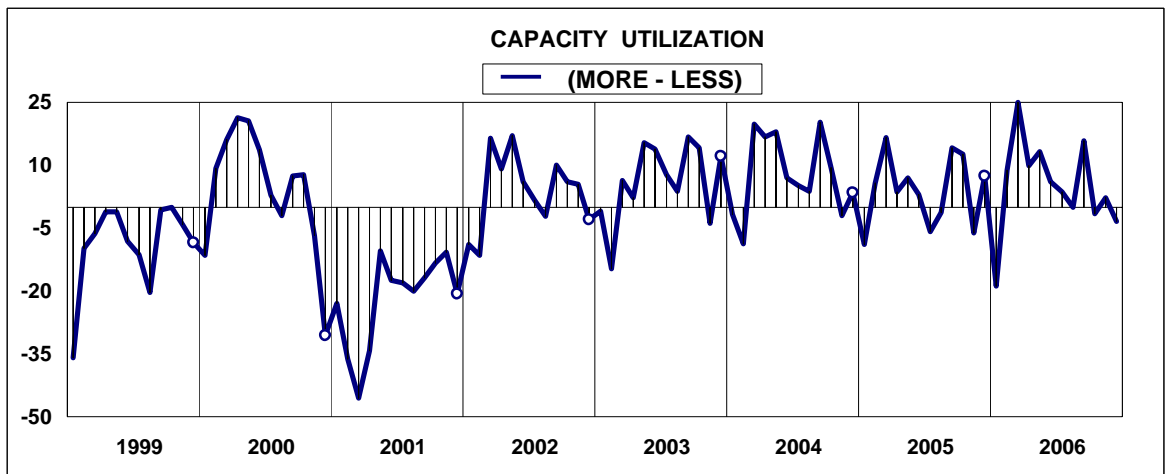
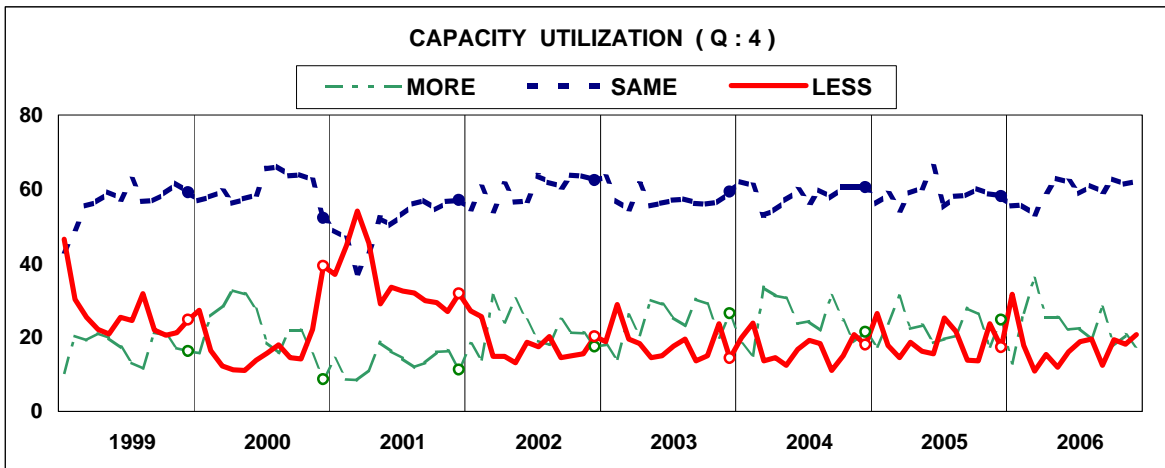


3- How much investment expenditure do you expect to realise over the next twelve months ?

(A=MORE, B=SAME, C=LESS)

MONTHS	PERCENT			A-C
	A	B	C	
0501	30.6	42.4	27.0	3.6
0502	29.3	42.1	28.6	.7
0503	27.8	41.1	31.1	-3.3
0504	23.7	44.0	32.3	-8.6
0505	22.5	46.2	31.3	-8.8
0506	23.2	43.9	32.9	-9.7
0507	26.1	41.6	32.3	-6.2
0508	24.4	42.4	33.2	-8.8
0509	26.0	44.5	29.5	-3.5
0510	26.8	44.7	28.5	-1.7
0511	27.5	44.3	28.2	-.7
0512	35.0	35.0	30.0	5.0

MONTHS	PERCENT			A-C
	A	B	C	
0601	31.7	35.6	32.7	-1.0
0602	29.6	36.4	34.0	-4.4
0603	27.5	38.6	33.9	-6.4
0604	26.8	40.5	32.7	-5.9
0605	23.9	43.5	32.6	-8.7
0606	24.3	43.3	32.4	-8.1
0607	24.8	43.6	31.6	-6.8
0608	23.6	43.2	33.2	-9.6
0609	25.7	43.3	31.0	-5.3
0610	25.8	44.1	30.1	-4.3
0611	26.6	40.4	33.0	-6.4
0612	25.0	45.2	29.8	-4.8

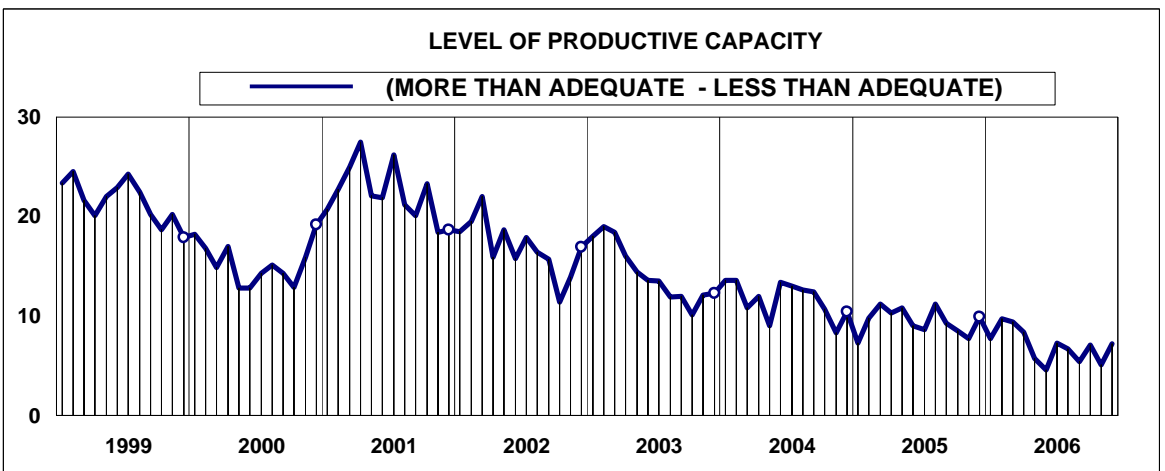
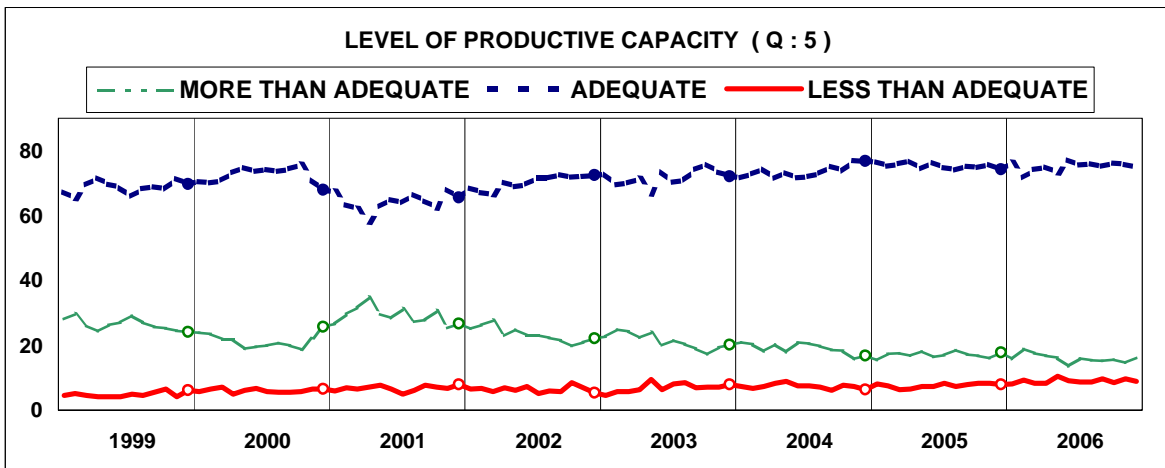


4- Your capacity utilization compared with previous month:

(A=MORE, B=SAME, C=LESS)

MONTHS	PERCENT			A-C
	A	B	C	
0501	17.5	56.1	26.4	-8.9
0502	23.6	58.6	17.8	5.8
0503	31.1	54.4	14.5	16.6
0504	22.3	59.0	18.7	3.6
0505	23.2	60.5	16.3	6.9
0506	18.5	66.0	15.5	3.0
0507	19.5	55.2	25.3	-5.8
0508	20.4	58.0	21.6	-1.2
0509	27.9	58.3	13.8	14.1
0510	26.2	60.2	13.6	12.6
0511	17.5	58.8	23.7	-6.2
0512	24.7	58.1	17.2	7.5

MONTHS	PERCENT			A-C
	A	B	C	
0601	12.9	55.4	31.7	-18.8
0602	26.6	55.6	17.8	8.8
0603	35.9	53.2	10.9	25.0
0604	25.2	59.5	15.3	9.9
0605	25.2	62.9	11.9	13.3
0606	22.1	61.8	16.1	6.0
0607	22.4	58.8	18.8	3.6
0608	19.5	61.0	19.5	0.0
0609	28.2	59.4	12.4	15.8
0610	17.8	62.8	19.4	-1.6
0611	20.5	61.3	18.2	2.3
0612	17.3	62.0	20.7	-3.4

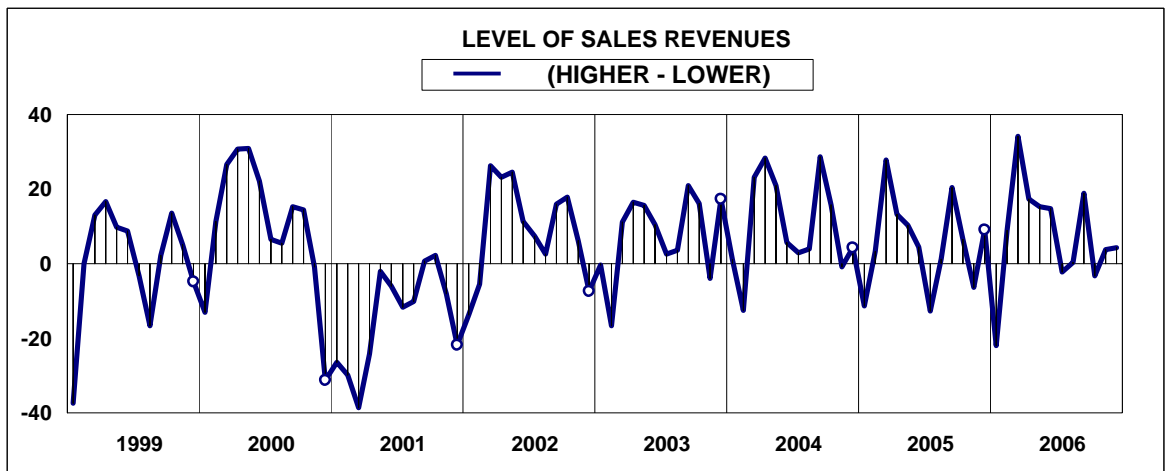
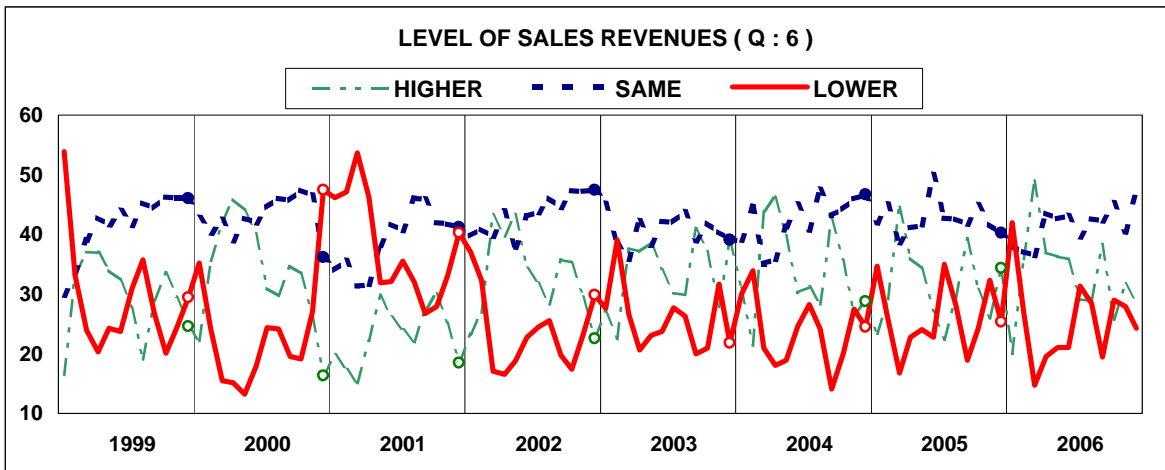


5- What is the level of your productive capacity in accordance with your expectations on demand for the next twelve months ?

(A=MORE THAN ADEQUATE, B=ADEQUATE, C=LESS THAN ADEQUATE)

MONTHS	PERCENT			A-C
	A	B	C	
0501	15.4	76.5	8.1	7.3
0502	17.3	75.2	7.5	9.8
0503	17.6	76.0	6.4	11.2
0504	16.8	76.7	6.5	10.3
0505	18.2	74.4	7.4	10.8
0506	16.3	76.4	7.3	9.0
0507	16.9	74.8	8.3	8.6
0508	18.6	74.0	7.4	11.2
0509	17.1	75.1	7.8	9.3
0510	16.8	74.9	8.3	8.5
0511	16.0	75.7	8.3	7.7
0512	17.8	74.3	7.9	9.9

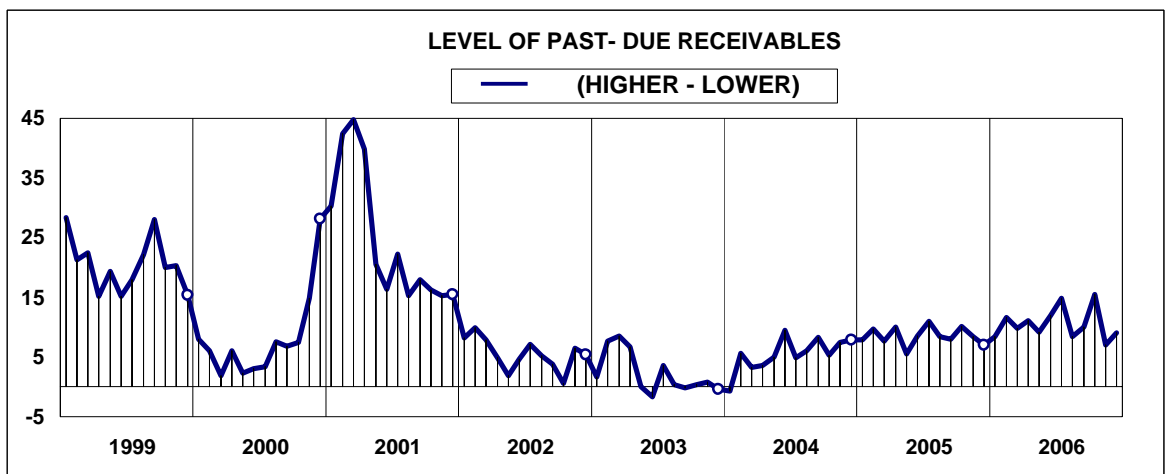
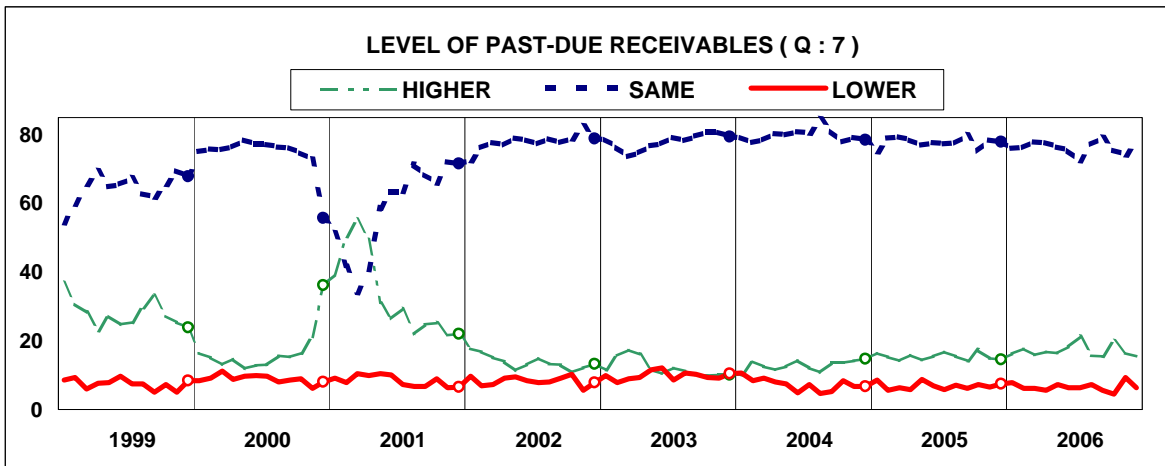
MONTHS	PERCENT			A-C
	A	B	C	
0601	15.8	76.1	8.1	7.7
0602	19.0	71.7	9.3	9.7
0603	17.6	74.2	8.2	9.4
0604	16.7	75.0	8.3	8.4
0605	16.2	73.3	10.5	5.7
0606	13.7	77.2	9.1	4.6
0607	15.9	75.5	8.6	7.3
0608	15.4	75.9	8.7	6.7
0609	15.1	75.2	9.7	5.4
0610	15.5	76.1	8.4	7.1
0611	14.7	75.7	9.6	5.1
0612	16.1	75.0	8.9	7.2



6- What is the level of your sales revenues compared with previous month ?

(A=HIGHER, B=SAME, C=LOWER)

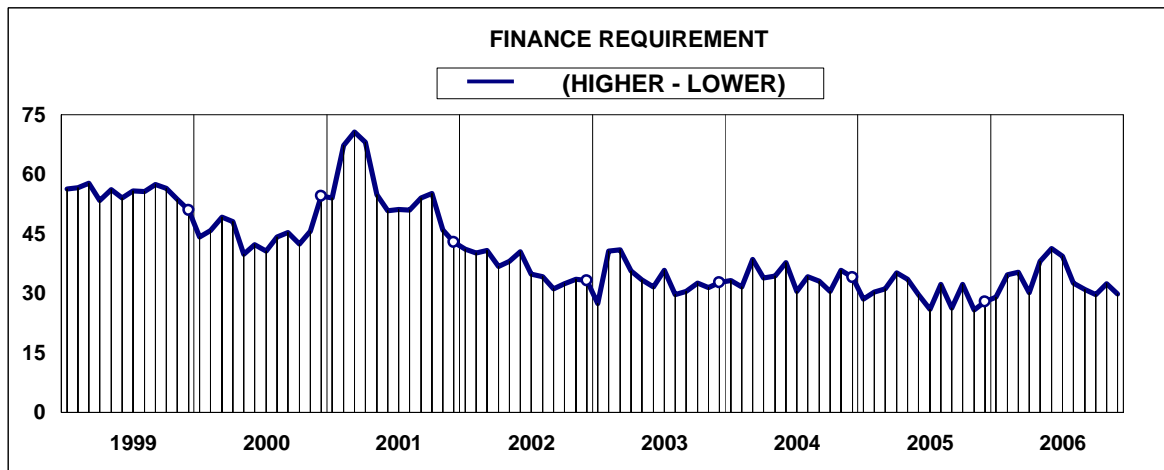
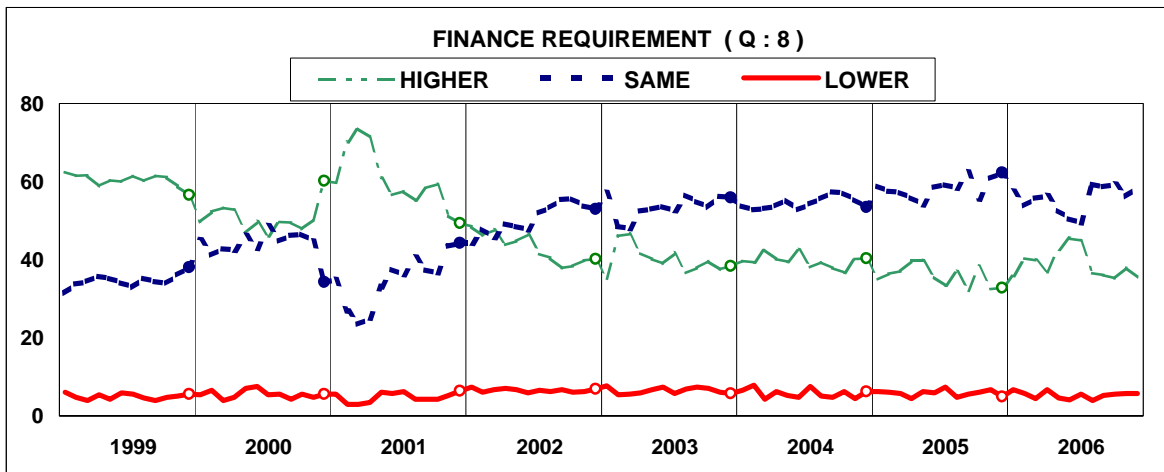
MONTHS	PERCENT			A-C	MONTHS	PERCENT			A-C
	A	B	C			A	B	C	
0501	23.3	42.0	34.7	-11.4	0601	20.0	38.0	42.0	-22.0
0502	29.1	45.1	25.8	3.3	0602	35.9	37.1	27.0	8.9
0503	44.6	38.6	16.8	27.8	0603	48.9	36.4	14.7	34.2
0504	36.1	41.1	22.8	13.3	0604	36.9	43.6	19.5	17.4
0505	34.4	41.5	24.1	10.3	0605	36.3	42.6	21.1	15.2
0506	27.2	50.0	22.8	4.4	0606	35.9	43.0	21.1	14.8
0507	22.3	42.7	35.0	-12.7	0607	29.1	39.6	31.3	-2.2
0508	29.3	42.6	28.1	1.2	0608	28.9	42.6	28.5	0.4
0509	39.3	41.8	18.9	20.4	0609	38.3	42.3	19.4	18.9
0510	30.8	44.9	24.3	6.5	0610	25.7	45.3	29.0	-3.3
0511	25.9	41.8	32.3	-6.4	0611	31.7	40.4	27.9	3.8
0512	34.4	40.3	25.3	9.1	0612	28.6	47.1	24.3	4.3



7- What is level of your past-due receivables compared with previous month ?

(A=HIGHER, B=SAME, C=LOWER)

MONTHS	PERCENT			A-C	MONTHS	PERCENT			A-C
	A	B	C			A	B	C	
0501	16.4	75.1	8.5	7.9	0601	16.2	76.0	7.8	8.4
0502	15.3	79.1	5.6	9.7	0602	17.7	76.2	6.1	11.6
0503	14.1	79.5	6.4	7.7	0603	15.9	78.0	6.1	9.8
0504	15.8	78.4	5.8	10.0	0604	16.7	77.7	5.6	11.1
0505	14.3	76.9	8.8	5.5	0605	16.4	76.4	7.2	9.2
0506	15.4	77.7	6.9	8.5	0606	18.2	75.5	6.3	11.9
0507	16.8	77.4	5.8	11.0	0607	21.2	72.5	6.3	14.9
0508	15.4	77.6	7.0	8.4	0608	15.6	77.2	7.2	8.4
0509	14.1	79.8	6.1	8.0	0609	15.5	79.0	5.5	10.0
0510	17.4	75.3	7.3	10.1	0610	20.0	75.5	4.5	15.5
0511	15.0	78.4	6.6	8.4	0611	16.4	74.2	9.4	7.0
0512	14.5	78.0	7.5	7.0	0612	15.5	78.1	6.4	9.1



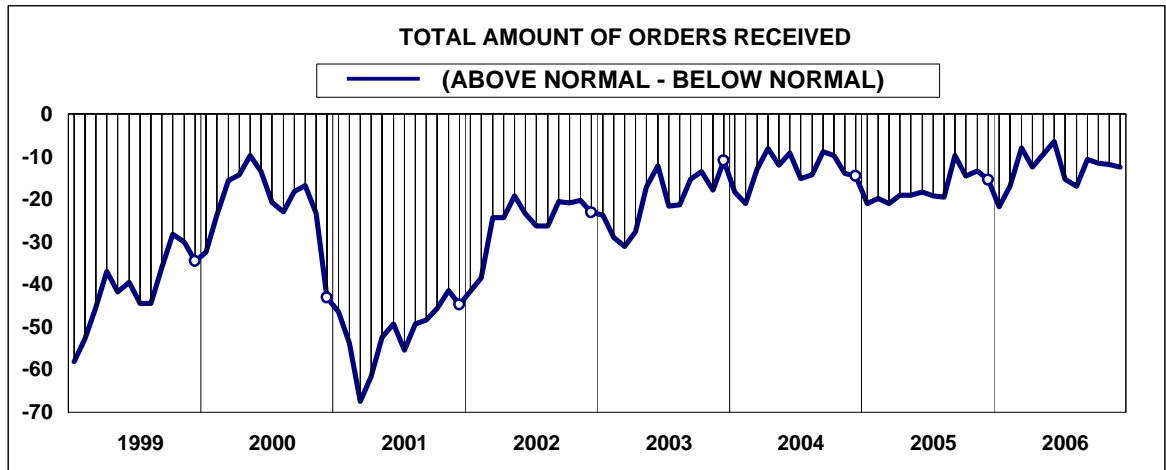
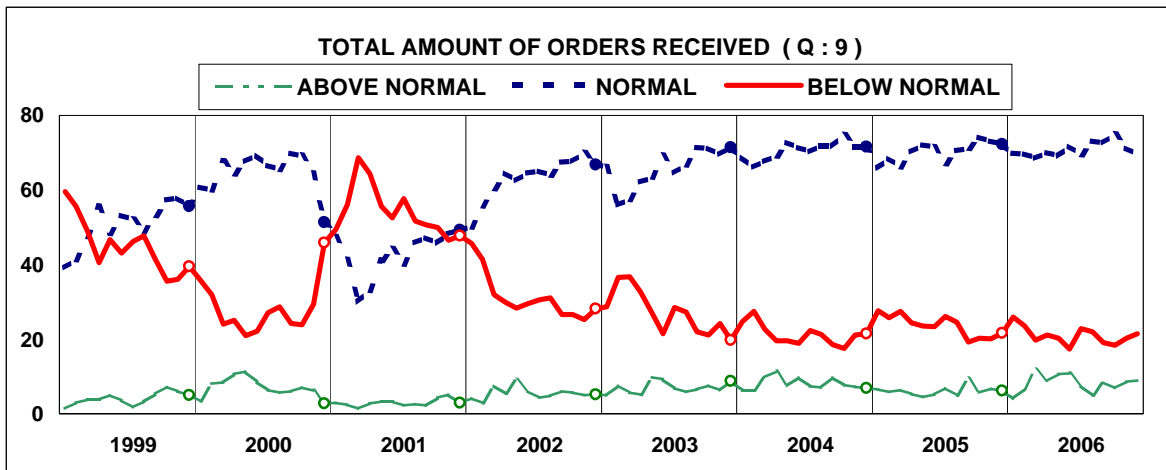
8- What is the finance requirement of your firm for the next month compared with previous month ?

(A=HIGHER, B=SAME, C=LOWER)

MONTHS	PERCENT			A-C
	A	B	C	
0501	34.9	58.8	6.3	28.6
0502	36.4	57.5	6.1	30.3
0503	37.0	57.2	5.8	31.2
0504	39.6	55.9	4.5	35.1
0505	39.7	54.1	6.2	33.5
0506	35.5	58.6	5.9	29.6
0507	33.4	59.2	7.4	26.0
0508	36.9	58.4	4.7	32.2
0509	31.9	62.5	5.6	26.3
0510	38.4	55.5	6.1	32.3
0511	32.5	60.8	6.7	25.8
0512	32.8	62.3	4.9	27.9

MONTHS	PERCENT			A-C
	A	B	C	
0601	35.9	57.3	6.8	29.1
0602	40.4	53.8	5.8	34.6
0603	39.8	55.7	4.5	35.3
0604	36.9	56.3	6.8	30.1
0605	42.7	52.7	4.6	38.1
0606	45.4	50.5	4.1	41.3
0607	45.0	49.4	5.6	39.4
0608	36.6	59.4	4.0	32.6
0609	36.1	58.7	5.2	30.9
0610	35.3	59.1	5.6	29.7
0611	38.1	56.2	5.7	32.4
0612	35.6	58.6	5.8	29.8

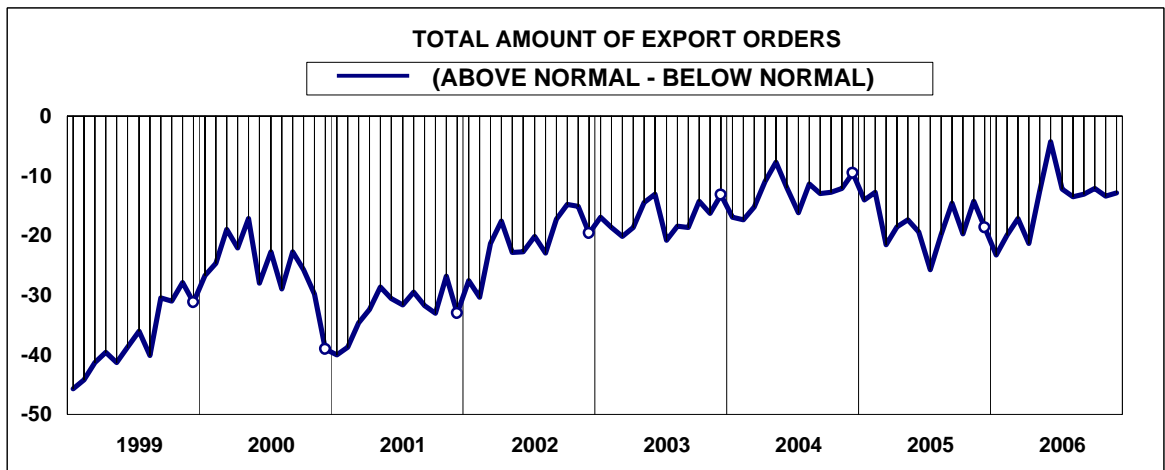
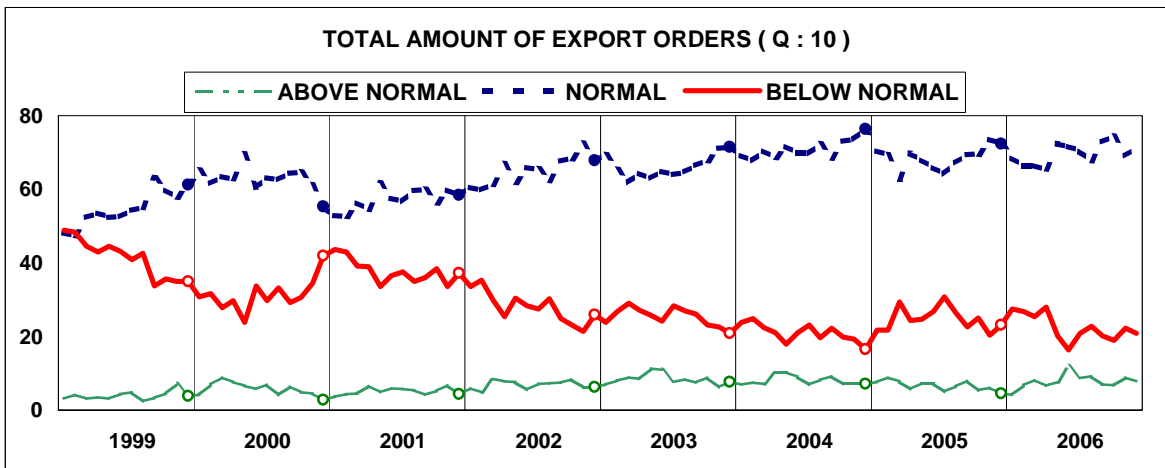
EXCLUDING SEASONAL VARIATIONS



9- Total amount of orders received this month:

(A=ABOVE NORMAL, B=NORMAL, C=BELOW NORMAL)

MONTHS	PERCENT			A-C	MONTHS	PERCENT			A-C
	A	B	C			A	B	C	
0501	6.5	65.9	27.6	-21.1	0601	4.2	69.8	26.0	-21.8
0502	5.8	68.5	25.7	-19.9	0602	6.7	69.7	23.6	-16.9
0503	6.3	66.3	27.4	-21.1	0603	11.8	68.5	19.7	-7.9
0504	5.3	70.3	24.4	-19.1	0604	8.8	70.0	21.2	-12.4
0505	4.4	72.1	23.5	-19.1	0605	10.7	69.1	20.2	-9.5
0506	5.1	71.5	23.4	-18.3	0606	10.9	71.7	17.4	-6.5
0507	6.8	67.1	26.1	-19.3	0607	7.6	69.5	22.9	-15.3
0508	4.9	70.6	24.5	-19.6	0608	4.9	73.2	21.9	-17.0
0509	9.5	71.2	19.3	-9.8	0609	8.4	72.6	19.0	-10.6
0510	5.7	74.1	20.2	-14.5	0610	6.8	74.8	18.4	-11.6
0511	6.7	73.2	20.1	-13.4	0611	8.5	71.2	20.3	-11.8
0512	6.2	72.2	21.6	-15.4	0612	9.0	69.5	21.5	-12.5

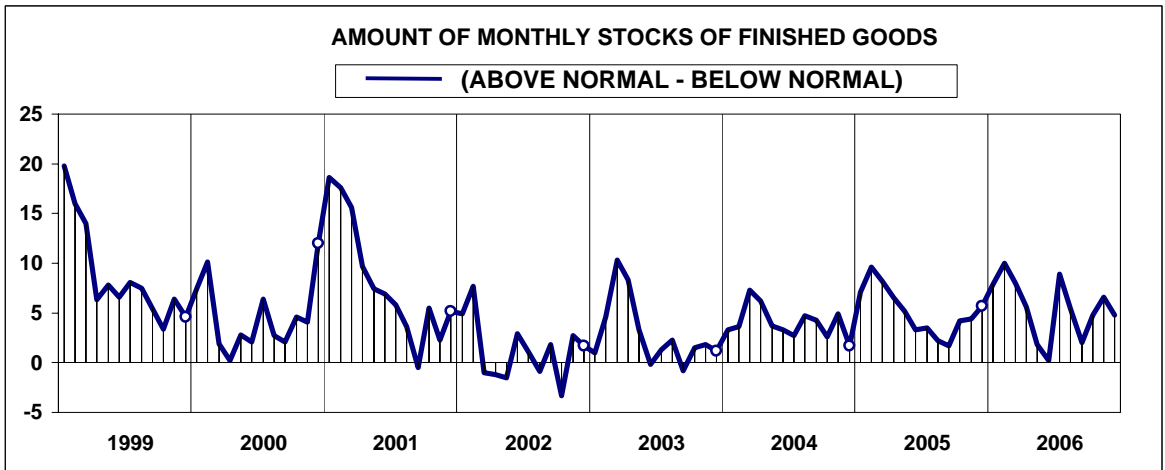
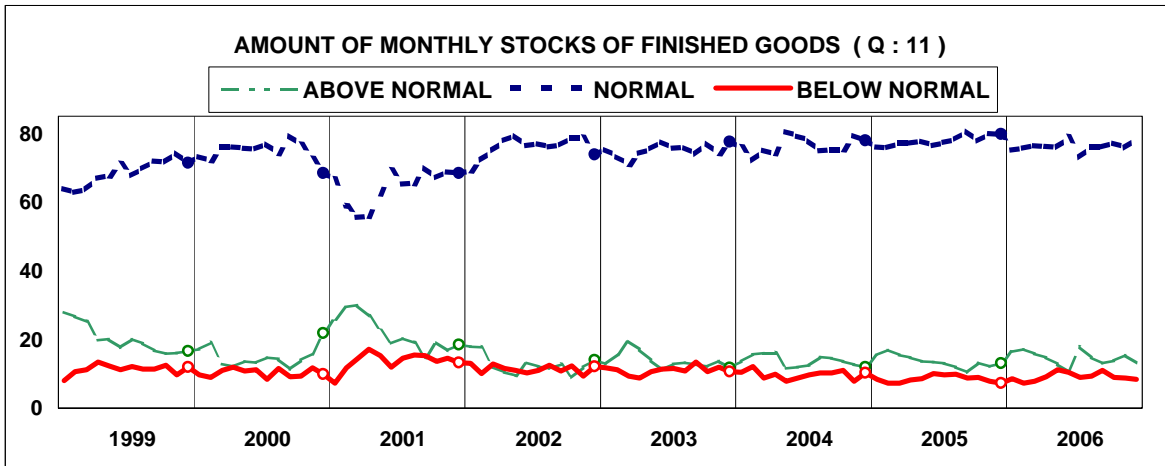


10 - Amount of export orders received this month:

(A=ABOVE NORMAL, B=NORMAL, C=BELOW NORMAL)

MONTHS	PERCENT			A-C
	A	B	C	
0501	7.7	70.5	21.8	-14.1
0502	8.9	69.4	21.7	-12.8
0503	7.8	62.8	29.4	-21.6
0504	5.8	69.8	24.4	-18.6
0505	7.3	68.0	24.7	-17.4
0506	7.3	66.0	26.7	-19.4
0507	5.1	64.1	30.8	-25.7
0508	6.5	67.1	26.4	-19.9
0509	8.0	69.4	22.6	-14.6
0510	5.4	69.5	25.1	-19.7
0511	6.1	73.5	20.4	-14.3
0512	4.5	72.3	23.2	-18.7

MONTHS	PERCENT			A-C
	A	B	C	
0601	4.1	68.5	27.4	-23.3
0602	6.8	66.4	26.8	-20.0
0603	8.2	66.4	25.4	-17.2
0604	6.6	65.4	28.0	-21.4
0605	7.6	72.3	20.1	-12.5
0606	12.0	71.7	16.3	-4.3
0607	8.7	70.4	20.9	-12.2
0608	9.3	67.9	22.8	-13.5
0609	7.0	72.9	20.1	-13.1
0610	6.8	74.3	18.9	-12.1
0611	8.8	69.0	22.2	-13.4
0612	7.9	71.3	20.8	-12.9



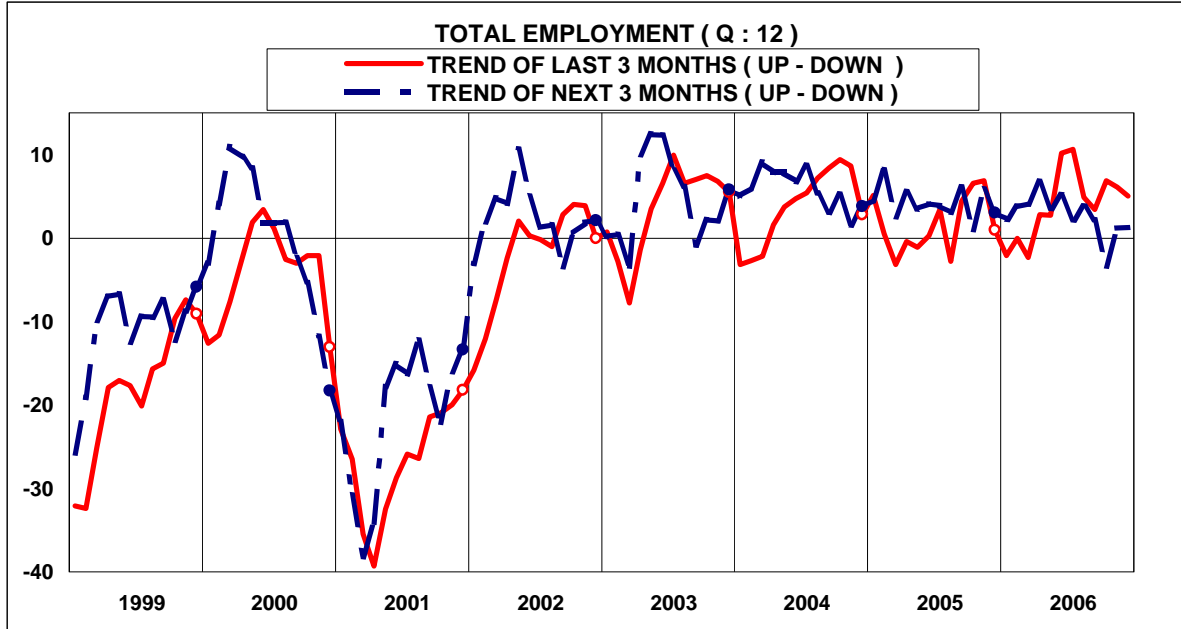
11 - Amount of monthly stocks of finished goods this month:

(A=ABOVE NORMAL, B=NORMAL, C=BELOW NORMAL)

MONTHS	PERCENT			A-C
	A	B	C	
0501	15.5	76.1	8.4	7.1
0502	16.9	75.8	7.3	9.6
0503	15.5	77.2	7.3	8.2
0504	14.7	77.1	8.2	6.5
0505	13.7	77.8	8.5	5.2
0506	13.4	76.5	10.1	3.3
0507	13.1	77.3	9.6	3.5
0508	12.0	78.2	9.8	2.2
0509	10.5	80.7	8.8	1.7
0510	13.2	77.8	9.0	4.2
0511	12.2	80.0	7.8	4.4
0512	13.0	79.7	7.3	5.7

MONTHS	PERCENT			A-C
	A	B	C	
0601	16.4	75.1	8.5	7.9
0602	17.2	75.6	7.2	10.0
0603	15.8	76.4	7.8	8.0
0604	14.7	76.2	9.1	5.6
0605	12.9	76.0	11.1	1.8
0606	10.7	78.8	10.5	0.2
0607	17.9	73.1	9.0	8.9
0608	14.7	76.0	9.3	5.4
0609	13.0	76.0	11.0	2.0
0610	13.8	77.2	9.0	4.8
0611	15.4	75.8	8.8	6.6
0612	13.2	78.4	8.4	4.8

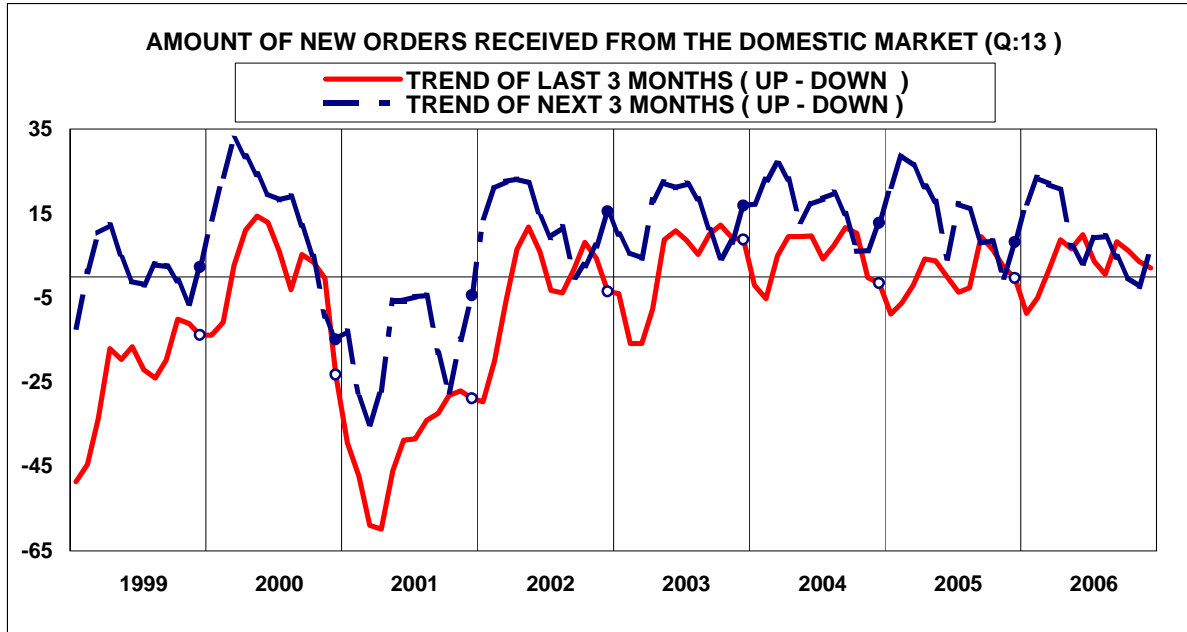
**EXCLUDING SEASONAL VARIATIONS, WHAT IS THE LAST THREE MONTHS' AND
WHAT WILL BE THE NEXT THREE MONTHS' TREND FOR THE
FOLLOWING ITEMS ?**



12-Total employment:

(A=UP, B=SAME, C=DOWN)

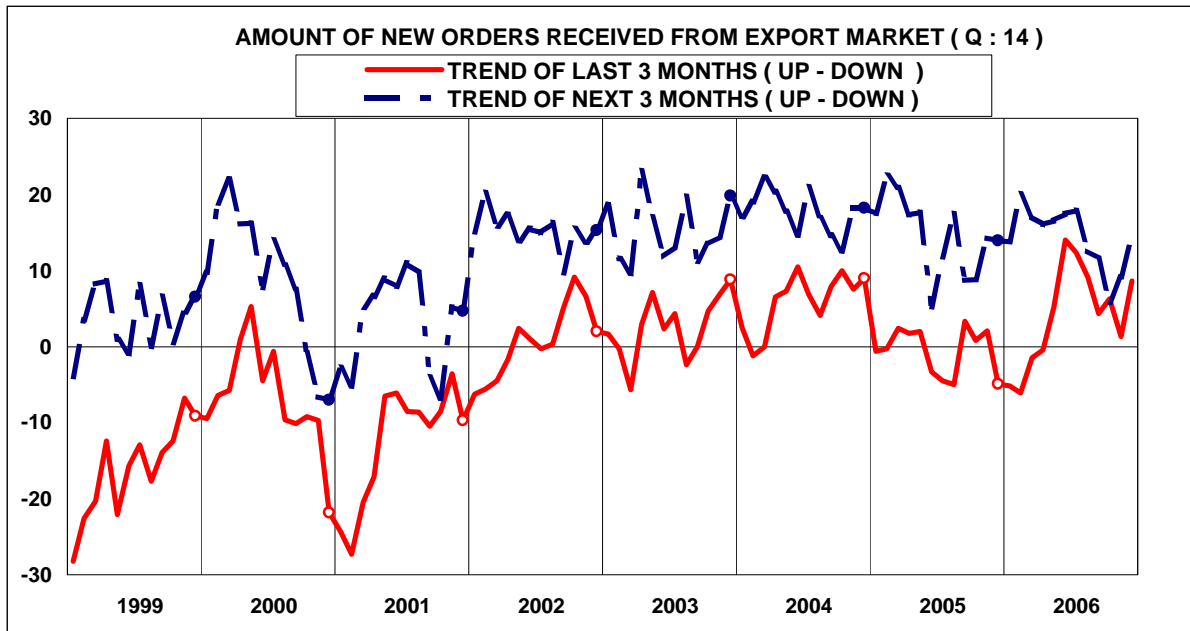
MONTHS	TREND OF LAST 3 MONTHS				TREND OF NEXT 3 MONTHS				TREND OF NEXT 3 MONTHS								
	PERCENT			A-C	PERCENT			A-C	PERCENT			A-C					
	A	B	C		37.4	B	C		A	B	C						
0501	17.5	70.1	12.4	5.1	16.7	71.1	12.2	4.5	0601	16.6	64.7	18.7	-2.1	16.6	69.1	14.3	2.3
0502	14.7	71.1	14.2	0.5	18.0	72.2	9.8	8.2	0602	15.8	68.4	15.8	0.0	18.1	67.5	14.4	3.7
0503	13.8	69.2	17.0	-3.2	13.8	74.9	11.3	2.5	0603	15.5	66.7	17.8	-2.3	17.6	68.9	13.5	4.1
0504	13.4	72.8	13.8	-0.4	16.1	73.3	10.6	5.5	0604	17.5	67.8	14.7	2.8	18.6	69.5	11.9	6.7
0505	13.5	71.9	14.6	-1.1	16.4	70.7	12.9	3.5	0605	18.6	65.5	15.9	2.7	17.2	69.2	13.6	3.6
0506	15.3	69.7	15.0	0.3	14.8	74.5	10.7	4.1	0606	21.0	68.2	10.8	10.2	17.6	69.9	12.5	5.1
0507	16.3	70.8	12.9	3.4	16.1	71.7	12.2	3.9	0607	21.0	68.6	10.4	10.6	16.4	69.4	14.2	2.2
0508	15.1	67.0	17.9	-2.8	14.6	73.8	11.6	3.0	0608	18.8	67.3	13.9	4.9	18.1	67.5	14.4	3.7
0509	15.8	72.8	11.4	4.4	16.9	72.3	10.8	6.1	0609	15.8	71.8	12.4	3.4	15.5	71.2	13.3	2.2
0510	18.5	69.6	11.9	6.6	12.4	76.2	11.4	1.0	0610	19.3	68.3	12.4	6.9	13.8	69.0	17.2	-3.4
0511	18.1	70.7	11.2	6.9	16.9	72.1	11.0	5.9	0611	16.9	72.3	10.8	6.1	17.9	65.4	16.7	1.2
0512	14.7	71.6	13.7	1.0	16.5	70.0	13.5	3.0	0612	20.2	64.6	15.2	5.0	17.3	66.7	16.0	1.3



13- Amount of new orders received from the domestic market:

(A=UP, B=SAME, C=DOWN)

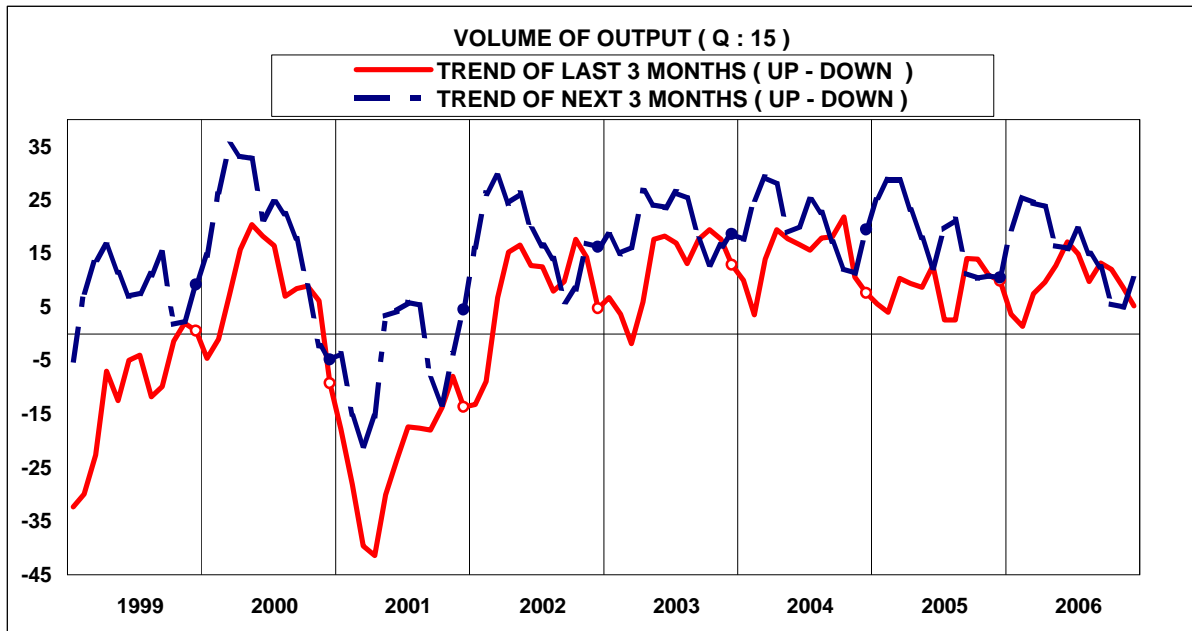
MONTHS	TREND OF LAST 3 MONTHS				TREND OF NEXT 3 MONTHS				TREND OF LAST 3 MONTHS				TREND OF NEXT 3 MONTHS				
	PERCENT			A-C	PERCENT			A-C	PERCENT			A-C	PERCENT			A-C	
A	B	C	A		B	C	A		B	C	A		B	C			
0501	16.7	57.7	25.6	-8.9	35.4	50.6	14.0	21.4	0601	16.7	57.9	25.4	-8.7	32.5	52.4	15.1	17.4
0502	18.6	56.6	24.8	-6.2	39.8	49.3	10.9	28.9	0602	19.3	56.3	24.4	-5.1	36.2	51.0	12.8	23.4
0503	19.8	58.4	21.8	-2.0	37.4	51.6	11.0	26.4	0603	24.2	53.2	22.6	1.6	36.2	49.5	14.3	21.9
0504	23.5	57.2	19.3	4.2	33.5	54.3	12.2	21.3	0604	25.9	57.0	17.1	8.8	34.6	51.4	14.0	20.6
0505	22.8	58.1	19.1	3.7	33.5	50.8	15.7	17.8	0605	25.5	55.6	18.9	6.6	24.1	58.9	17.0	7.1
0506	20.6	58.8	20.6	0.0	23.3	57.8	18.9	4.4	0606	25.3	59.3	15.4	9.9	23.6	56.1	20.3	3.3
0507	19.8	56.7	23.5	-3.7	30.9	55.4	13.7	17.2	0607	24.0	55.6	20.4	3.6	26.2	56.8	17.0	9.2
0508	19.3	58.7	22.0	-2.7	32.0	52.0	16.0	16.0	0608	20.0	60.5	19.5	0.5	26.8	55.9	17.3	9.5
0509	26.2	57.1	16.7	9.5	25.7	56.6	17.7	8.0	0609	24.0	60.3	15.7	8.3	23.3	58.0	18.7	4.6
0510	25.1	56.2	18.7	6.4	24.1	60.2	15.7	8.4	0610	23.7	58.8	17.5	6.2	21.1	57.8	21.1	0.0
0511	22.2	58.0	19.8	2.4	20.0	59.8	20.2	-0.2	0611	22.6	58.4	19.0	3.6	20.7	56.2	23.1	-2.4
0512	21.1	57.5	21.4	-0.3	26.4	55.3	18.3	8.1	0612	22.2	57.7	20.1	2.1	26.8	52.6	20.6	6.2



14- Amount of new orders received from the export market:

(A=UP, B=SAME, C=DOWN)

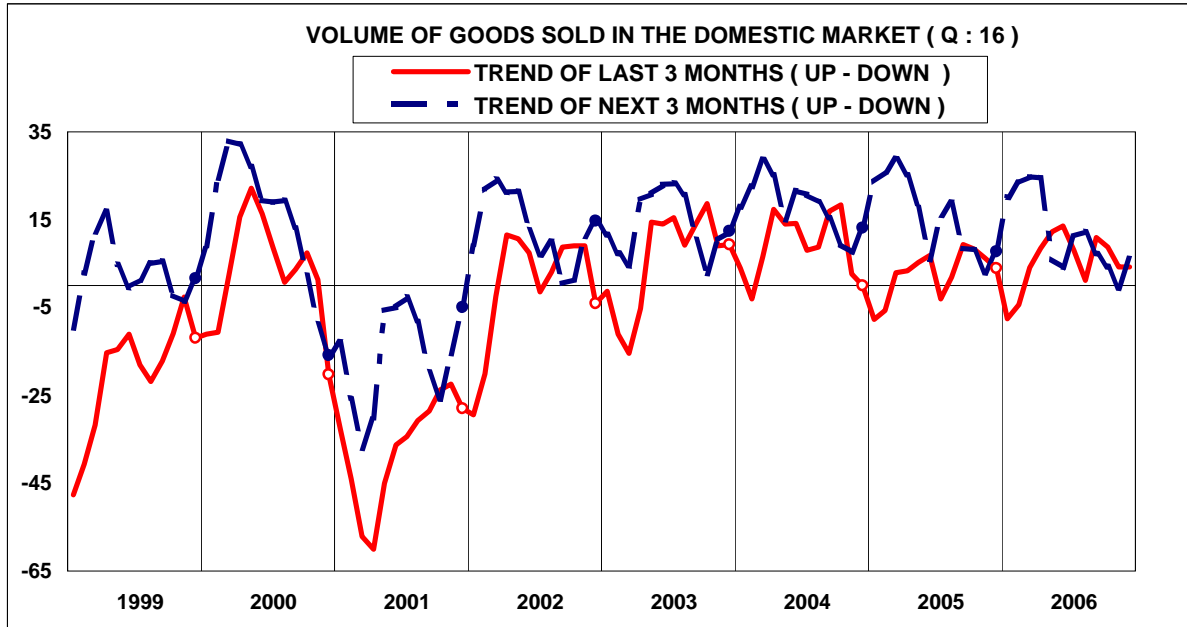
MONTHS	TREND OF LAST 3 MONTHS				TREND OF NEXT 3 MONTHS				TREND OF LAST 3 MONTHS				TREND OF NEXT 3 MONTHS				
	PERCENT			A-C	PERCENT			A-C	PERCENT			A-C	PERCENT			A-C	
	A	B	C		A	B	C		A	B	C		A	B	C		
0501	18.5	62.4	19.1	-0.6	31.2	55.1	13.7	17.5	0601	16.7	62.0	21.6	-5.2	29.6	54.6	15.8	13.8
0502	18.4	62.9	18.7	-0.3	34.9	52.6	12.5	22.4	0602	17.8	58.3	23.9	-6.1	36.0	48.0	16.0	20.0
0503	22.4	57.6	20.0	2.4	37.4	52.1	13.5	20.9	0603	20.4	57.7	21.9	-1.5	32.2	52.7	15.1	17.1
0504	20.3	61.1	18.6	1.7	30.0	57.3	12.7	17.3	0604	20.8	57.9	21.3	-0.5	29.9	56.2	13.9	16.0
0505	20.5	61.0	18.5	2.0	31.0	55.6	13.4	17.6	0605	22.5	60.2	17.3	5.2	29.6	57.3	13.1	16.5
0506	16.3	64.1	19.6	-3.3	22.1	61.0	16.9	5.2	0606	27.4	59.2	13.4	14.0	30.7	56.1	13.2	17.5
0507	18.1	59.3	22.6	-4.5	27.2	57.3	15.5	11.7	0607	26.1	60.1	13.8	12.3	30.2	57.5	12.3	17.9
0508	15.4	64.2	20.4	-5.0	30.1	57.3	12.6	17.5	0608	23.8	61.5	14.7	9.1	26.8	59.0	14.2	12.6
0509	18.9	65.5	15.6	3.3	23.5	61.7	14.8	8.7	0609	19.5	65.3	15.2	4.3	24.3	63.0	12.7	11.6
0510	20.3	60.2	19.5	0.8	25.2	58.4	16.4	8.8	0610	21.3	63.7	15.0	6.3	21.1	63.6	15.3	5.8
0511	18.3	65.5	16.2	2.1	27.2	59.9	12.9	14.3	0611	19.6	62.1	18.3	1.3	25.3	58.5	16.2	9.1
0512	16.2	62.7	21.1	-4.9	29.3	55.3	15.4	13.9	0612	22.9	62.8	14.3	8.6	28.3	57.7	14.0	14.3



15- Volume of output:

(A=UP, B=SAME, C=DOWN)

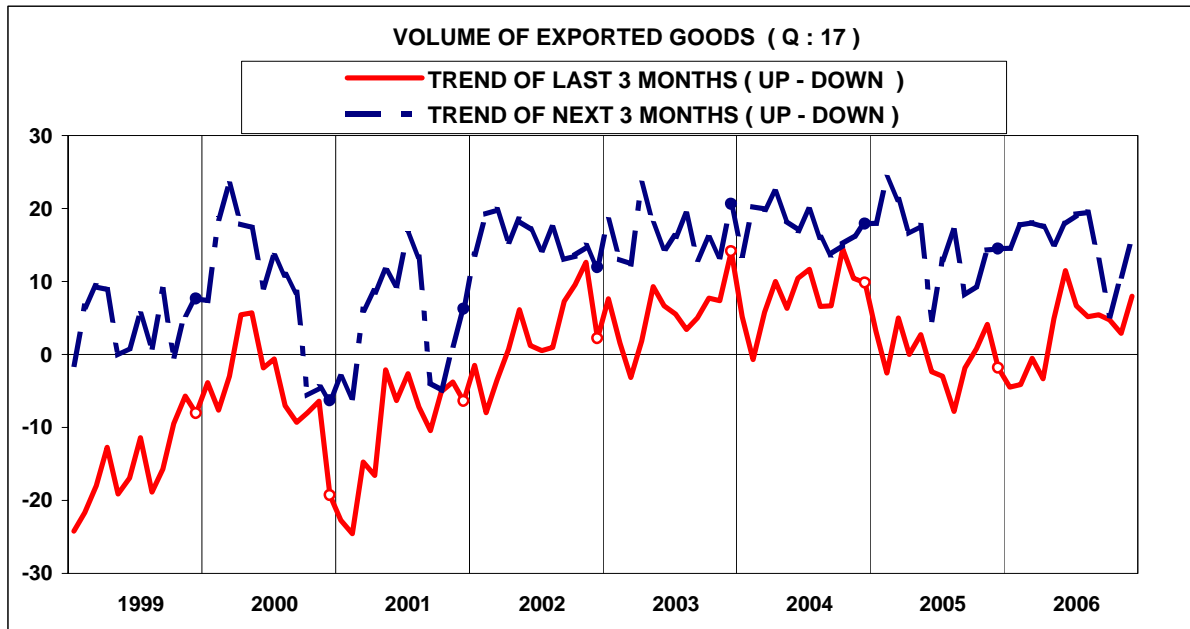
MONTHS	TREND OF LAST 3 MONTHS				TREND OF NEXT 3 MONTHS				MONTHS	TREND OF LAST 3 MONTHS				TREND OF NEXT 3 MONTHS			
	PERCENT			A-C	PERCENT			A-C		PERCENT			A-C	PERCENT			A-C
A	B	C	A		B	C	A		B	C	A	B		C	A	B	
0501	22.2	61.2	16.6	5.6	37.1	51.3	11.6	25.5	0601	16.7	59.4	18.5	3.6	31.7	56.1	12.2	19.5
0502	22.8	58.4	18.8	4.0	39.3	50.0	10.7	28.6	0602	18.8	63.8	17.4	1.4	37.1	51.3	11.6	25.5
0503	25.6	59.1	15.3	10.3	37.4	51.6	9.9	28.6	0603	25.4	56.7	17.9	7.5	36.6	51.3	12.1	24.5
0504	26.0	57.4	16.6	9.4	35.3	52.6	12.1	23.2	0604	24.7	60.2	15.1	9.6	35.6	52.5	11.9	23.7
0505	25.1	58.5	16.4	8.7	31.7	54.5	13.8	17.9	0605	25.7	61.3	13.0	12.7	28.5	59.5	12.0	16.5
0506	26.4	60.0	13.6	12.8	25.9	60.5	13.6	12.3	0606	28.3	60.6	11.1	17.2	28.8	58.4	12.8	16.0
0507	21.5	59.6	18.9	2.6	31.7	56.2	12.1	19.6	0607	27.6	59.7	12.7	14.9	30.1	59.2	10.7	19.4
0508	20.7	61.2	18.1	2.6	33.3	54.8	11.9	21.4	0608	23.6	62.6	13.8	9.8	28.3	58.3	13.4	14.9
0509	27.0	60.0	13.0	14.0	25.9	59.5	14.6	11.3	0609	24.9	63.4	11.7	13.2	26.0	60.5	13.5	12.5
0510	27.5	58.9	13.6	13.9	23.2	63.9	12.9	10.3	0610	25.6	60.8	13.6	12.0	23.9	57.8	18.3	5.6
0511	25.3	60.4	14.3	11.0	27.0	56.8	16.2	10.8	0611	24.0	60.7	15.3	8.7	23.8	57.4	18.8	5.0
0512	25.0	59.9	15.1	9.9	27.3	55.9	16.8	10.5	0612	20.8	63.6	15.6	5.2	27.4	55.4	17.2	10.2



16- Volume of goods sold in the domestic market:

(A=UP, B=SAME, C=DOWN)

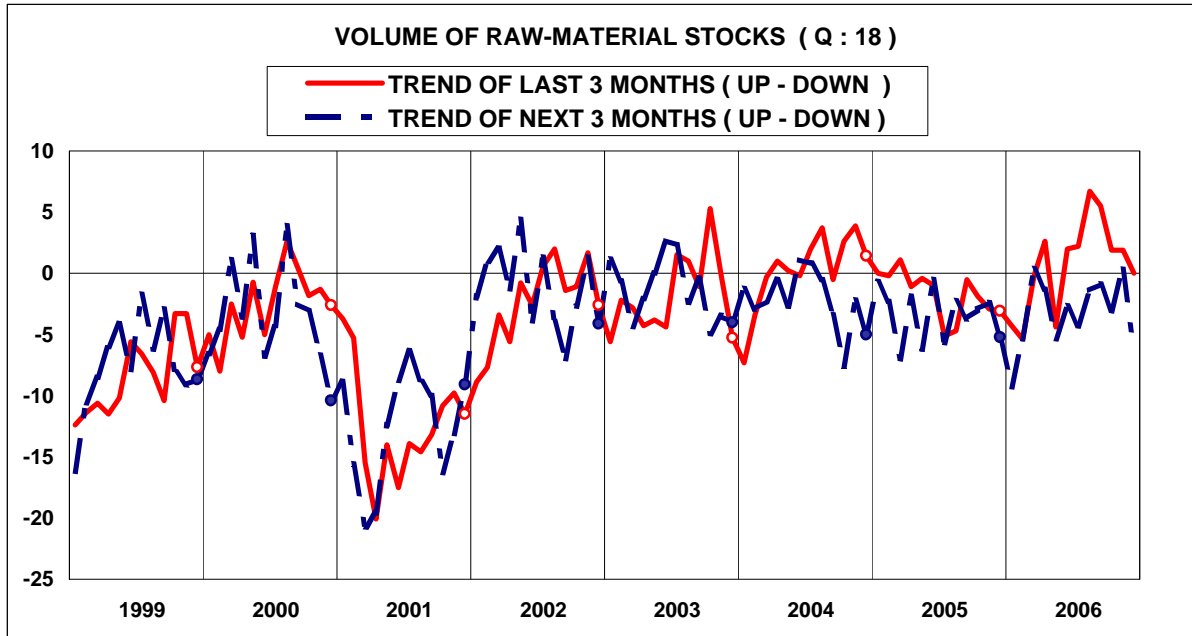
MONTHS	TREND OF LAST 3 MONTHS				TREND OF NEXT 3 MONTHS				TREND OF LAST 3 MONTHS				TREND OF NEXT 3 MONTHS				
	PERCENT			A-C	PERCENT			A-C	16.7			A-C	PERCENT			A-C	
	A	B	C		A	B	C		A	B	C		A	B	C		
0501	18.0	56.3	25.7	-7.7	37.4	49.1	13.6	23.7	0601	20.0	52.4	27.6	-7.6	35.2	49.8	15.0	20.2
0502	18.8	56.8	24.4	-5.6	38.7	48.6	12.7	26.0	0602	19.9	55.9	24.2	-4.3	37.0	49.3	13.7	23.3
0503	25.4	52.1	22.5	2.9	40.3	48.1	11.6	28.7	0603	27.6	48.9	23.5	4.1	40.0	44.8	15.2	24.8
0504	26.0	51.4	22.6	3.4	37.7	49.9	12.4	25.3	0604	27.5	53.4	19.1	8.4	37.3	49.9	12.8	24.5
0505	23.6	58.0	18.4	5.2	32.7	52.4	14.9	17.8	0605	31.0	50.2	18.8	12.2	25.1	55.9	19.0	6.1
0506	26.0	54.9	19.1	6.9	25.5	54.9	19.6	5.9	0606	28.6	56.4	15.0	13.6	24.1	55.9	20.0	4.1
0507	21.8	53.4	24.8	-3.0	30.8	54.4	14.8	16.0	0607	28.4	51.3	20.3	8.1	28.2	54.9	16.9	11.3
0508	23.5	54.9	21.6	1.9	33.5	51.8	14.7	18.8	0608	21.7	57.8	20.5	1.2	28.9	54.4	16.7	12.2
0509	26.3	56.7	17.0	9.3	26.1	56.2	17.7	8.4	0609	29.2	52.5	18.3	10.9	27.4	52.3	20.3	7.1
0510	27.6	53.1	19.3	8.3	24.1	60.0	15.9	8.2	0610	26.9	55.0	18.1	8.8	24.3	55.7	20.0	4.3
0511	25.7	54.9	19.4	6.3	21.6	59.7	18.7	2.9	0611	24.2	55.8	20.0	4.2	21.4	56.7	21.9	-0.5
0512	25.5	52.9	21.6	3.9	27.3	53.2	19.5	7.8	0612	23.3	57.7	19.0	4.3	25.7	54.7	19.6	6.1



17- Volume of exported goods:

(A=UP, B=SAME, C=DOWN)

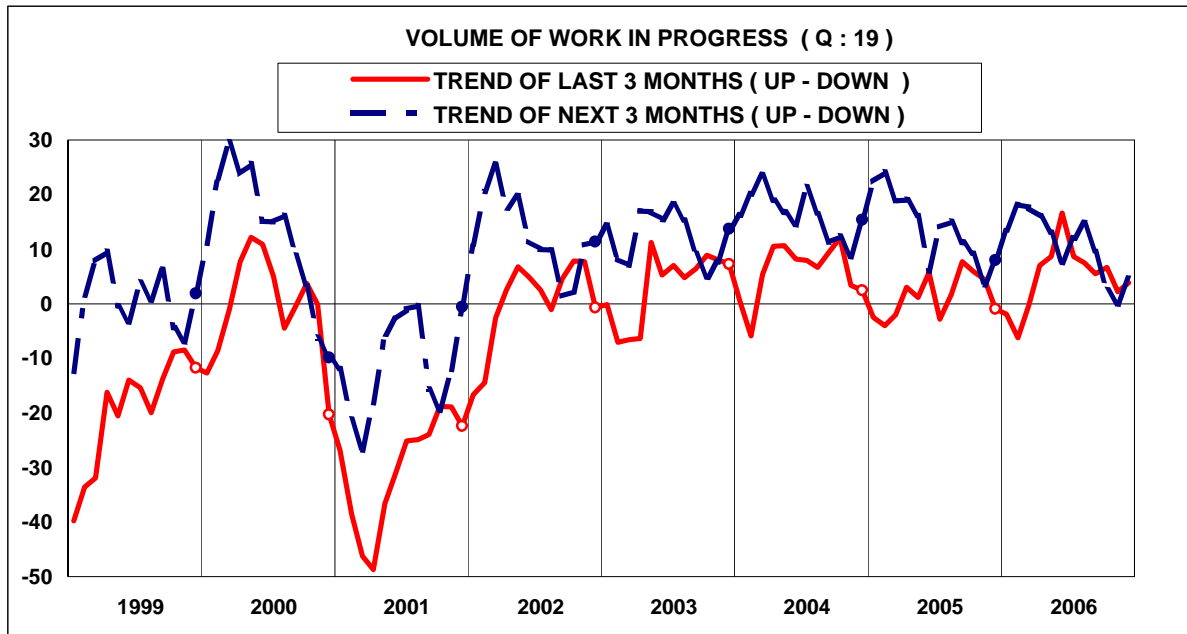
MONTHS	TREND OF LAST 3 MONTHS				TREND OF NEXT 3 MONTHS				TREND OF LAST 3 MONTHS				TREND OF NEXT 3 MONTHS				
	PERCENT			A-C	PERCENT			A-C	PERCENT			A-C	PERCENT			A-C	
A	B	C	A		B	C	A		B	C	A		B	C	A		B
0501	21.2	60.8	18.0	3.2	31.7	54.6	13.7	18.0	0601	16.7	58.5	23.0	-4.5	30.3	54.0	15.7	14.6
0502	16.7	64.1	19.2	-2.5	36.2	51.7	12.1	24.1	0602	18.8	58.3	22.9	-4.1	34.9	47.9	17.2	17.7
0503	25.7	53.6	20.7	5.0	37.4	52.2	13.3	21.2	0603	21.0	57.5	21.5	-0.5	33.4	51.3	15.3	18.1
0504	21.4	57.2	21.4	0.0	31.3	53.9	14.8	16.5	0604	19.4	57.9	22.7	-3.3	32.2	53.1	14.7	17.5
0505	22.0	58.7	19.3	2.7	32.2	53.2	14.6	17.6	0605	22.5	59.9	17.6	4.9	30.7	53.8	15.5	15.2
0506	19.1	59.4	21.5	-2.4	24.0	56.7	19.3	4.7	0606	27.4	56.7	15.9	11.5	32.6	52.6	14.8	17.8
0507	19.6	57.8	22.6	-3.0	28.0	57.0	15.0	13.0	0607	24.6	57.5	17.9	6.7	31.1	57.0	11.9	19.2
0508	15.6	61.0	23.4	-7.8	31.2	54.5	14.3	16.9	0608	23.9	57.4	18.7	5.2	33.7	52.1	14.2	19.5
0509	17.1	64.0	18.9	-1.8	24.7	58.7	16.6	8.1	0609	23.1	59.2	17.7	5.4	27.1	58.7	14.2	12.9
0510	21.0	58.8	20.2	0.8	27.2	55.1	17.7	9.5	0610	22.1	60.5	17.4	4.7	22.9	59.5	17.6	5.3
0511	20.5	63.1	16.4	4.1	27.2	59.9	12.9	14.3	0611	23.5	55.9	20.6	2.9	28.5	53.7	17.8	10.7
0512	17.0	64.2	18.8	-1.8	29.8	54.9	15.3	14.5	0612	24.3	59.4	16.3	8.0	30.0	55.8	14.2	15.8



18- Volume of raw-material stocks:

(A=UP, B=SAME, C=DOWN)

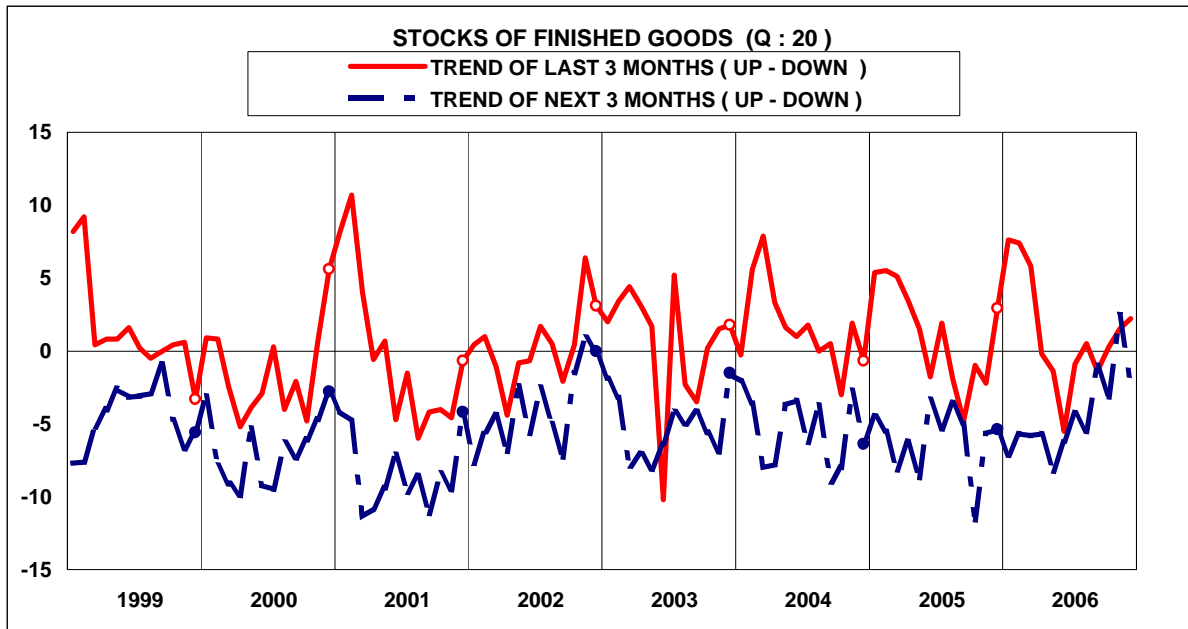
MONTHS	TREND OF LAST 3 MONTHS				TREND OF NEXT 3 MONTHS				TREND OF LAST 3 MONTHS				TREND OF NEXT 3 MONTHS				
	PERCENT			A-C	PERCENT			A-C	PERCENT			A-C	PERCENT			A-C	
A	B	C	A		B	C	A		B	C	A		B	C	A		B
0501	14.6	70.8	14.6	0.0	15.6	68.1	16.3	-0.7	0601	16.7	66.7	18.8	-4.3	13.6	63.5	22.9	-9.3
0502	15.1	69.6	15.3	-0.2	14.4	68.9	16.7	-2.3	0602	12.1	70.4	17.5	-5.4	13.5	67.6	18.9	-5.4
0503	17.0	67.1	15.9	1.1	37.4	67.4	19.8	-7.0	0603	16.4	67.0	16.6	-0.2	16.4	67.5	16.1	0.3
0504	16.8	65.3	17.9	-1.1	16.6	64.9	18.5	-1.9	0604	18.0	66.6	15.4	2.6	16.9	64.9	18.2	-1.3
0505	13.7	72.2	14.1	-0.4	13.7	66.4	19.9	-6.2	0605	13.2	69.2	17.6	-4.4	14.8	65.0	20.2	-5.4
0506	15.3	68.4	16.3	-1.0	15.8	67.9	16.3	-0.5	0606	17.4	67.2	15.4	2.0	14.7	67.9	17.4	-2.7
0507	16.7	61.5	21.8	-5.1	14.7	64.9	20.4	-5.7	0607	18.9	64.4	16.7	2.2	15.3	65.1	19.6	-4.3
0508	14.2	66.9	18.9	-4.7	16.1	65.5	18.4	-2.3	0608	20.6	65.5	13.9	6.7	17.0	64.6	18.4	-1.4
0509	15.6	68.3	16.1	-0.5	15.2	65.9	18.9	-3.7	0609	19.6	66.3	14.1	5.5	17.1	64.9	18.0	-0.9
0510	15.2	67.7	17.1	-1.9	13.3	70.5	16.2	-2.9	0610	17.4	67.1	15.5	1.9	15.5	65.9	18.6	-3.1
0511	13.5	70.1	16.4	-2.9	14.2	69.2	16.6	-2.4	0611	17.4	67.1	15.5	1.9	16.7	66.9	16.4	0.3
0512	16.0	64.9	19.1	-3.1	15.7	63.4	20.9	-5.2	0612	17.9	64.2	17.9	0.0	14.1	65.6	20.3	-6.2



19- Volume of work in progress:

(A=UP, B=SAME, C=DOWN)

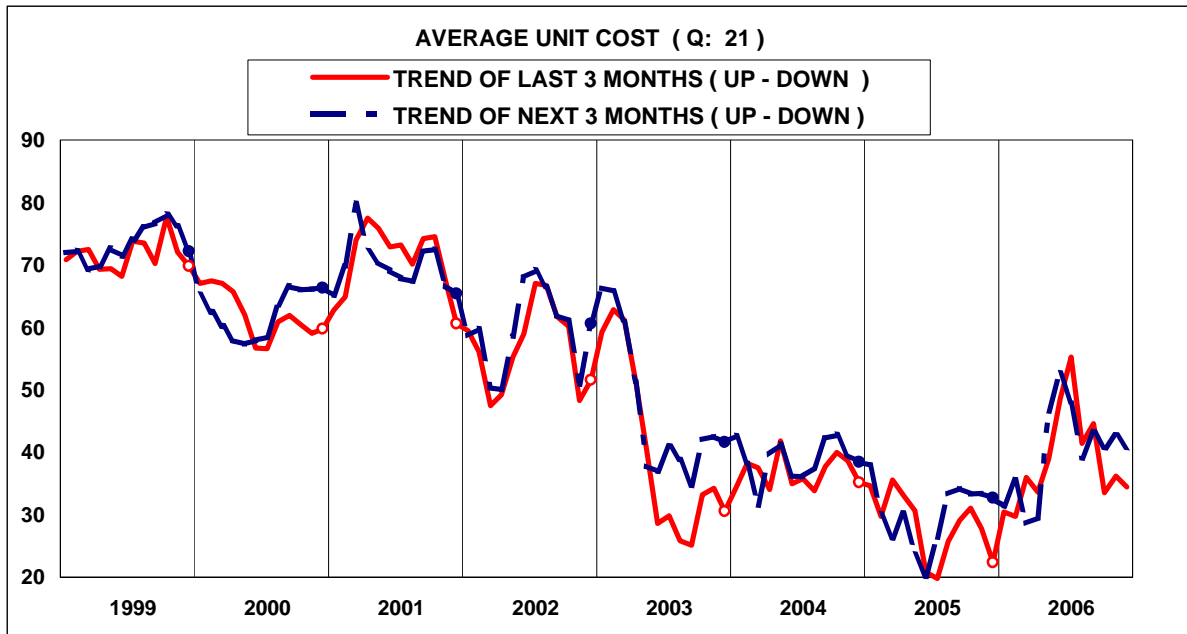
MONTHS	TREND OF LAST 3 MONTHS				TREND OF NEXT 3 MONTHS				TREND OF LAST 3 MONTHS				TREND OF NEXT 3 MONTHS				
	PERCENT			A-C	PERCENT			A-C	PERCENT			A-C	PERCENT			A-C	
A	B	C	A		B	C	A		B	C	A		B	C			
0501	17.5	62.5	20.0	-2.5	34.5	53.4	12.1	22.4	0601	16.7	63.9	19.0	-1.9	27.8	57.9	14.3	13.5
0502	16.6	62.8	20.6	-4.0	36.1	51.9	12.0	24.1	0602	14.8	64.1	21.1	-6.3	33.3	51.6	15.1	18.2
0503	16.4	65.2	18.4	-2.0	37.4	54.5	13.3	18.9	0603	19.5	60.7	19.8	-0.3	33.3	51.1	15.6	17.7
0504	20.9	61.2	17.9	3.0	31.9	55.2	12.9	19.0	0604	22.4	62.2	15.4	7.0	31.6	52.8	15.6	16.0
0505	18.9	63.3	17.8	1.1	30.9	54.4	14.7	16.2	0605	21.9	64.8	13.3	8.6	27.4	58.3	14.3	13.1
0506	21.6	62.5	15.9	5.7	23.6	58.8	17.6	6.0	0606	26.8	63.0	10.2	16.6	24.1	59.3	16.6	7.5
0507	18.5	60.2	21.3	-2.8	29.0	56.0	15.0	14.0	0607	21.5	65.7	12.8	8.7	25.6	60.9	13.5	12.1
0508	19.3	63.1	17.6	1.7	29.3	56.4	14.3	15.0	0608	21.8	63.9	14.3	7.5	29.0	56.7	14.3	14.7
0509	21.7	64.3	14.0	7.7	26.8	57.6	15.6	11.2	0609	19.3	66.9	13.8	5.5	25.2	59.2	15.6	9.6
0510	22.4	61.1	16.5	5.9	23.2	62.8	14.0	9.2	0610	21.2	64.2	14.6	6.6	20.9	60.6	18.5	2.4
0511	19.8	64.8	15.4	4.4	21.7	60.0	18.3	3.4	0611	18.8	64.6	16.6	2.2	20.2	59.6	20.2	0.0
0512	17.0	65.0	18.0	-1.0	25.8	56.4	17.8	8.0	0612	20.0	63.8	16.2	3.8	24.7	55.3	20.0	4.7



20- Stocks of finished goods:

(A=UP, B=SAME, C=DOWN)

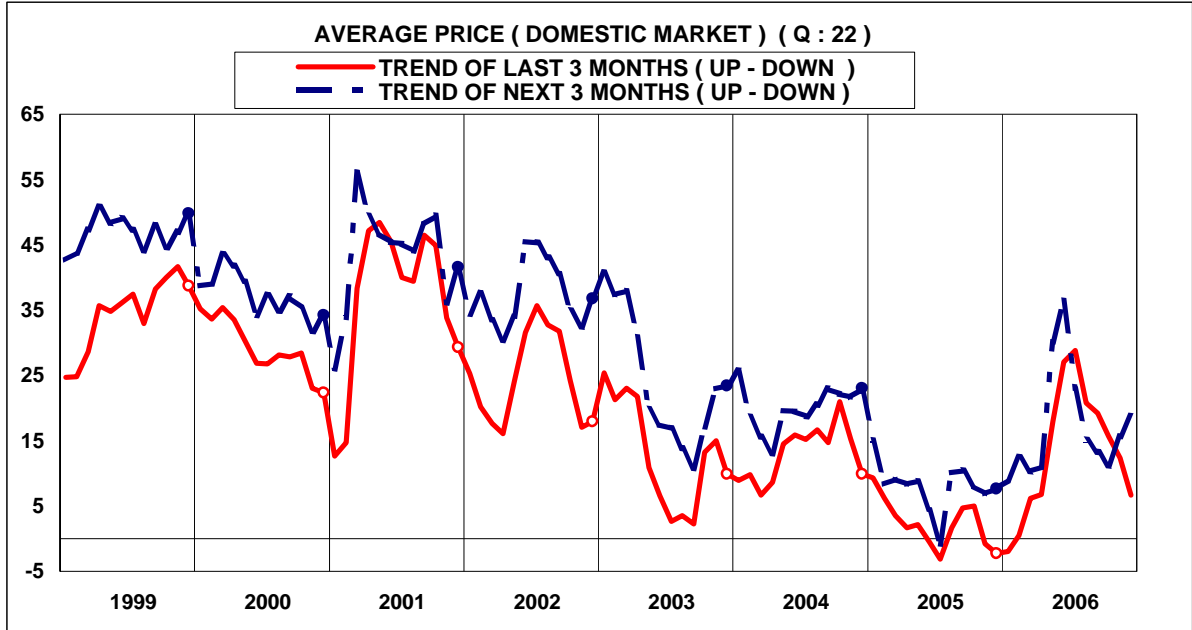
MONTHS	TREND OF LAST 3 MONTHS				TREND OF NEXT 3 MONTHS				TREND OF LAST 3 MONTHS				TREND OF NEXT 3 MONTHS				
	PERCENT			A-C	PERCENT			A-C	PERCENT			A-C	PERCENT			A-C	
A	B	C	A		B	C	A		B	C	A		B	C	A		B
0501	20.9	63.6	15.5	5.4	15.7	64.1	20.2	-4.5	0601	16.7	61.8	15.3	7.6	15.0	62.8	22.2	-7.2
0502	19.8	65.9	14.3	5.5	14.5	65.5	20.0	-5.5	0602	21.3	64.8	13.9	7.4	15.6	63.1	21.3	-5.7
0503	19.8	65.5	14.7	5.1	37.4	65.6	21.3	-8.2	0603	22.2	61.4	16.4	5.8	15.0	64.2	20.8	-5.8
0504	18.9	65.7	15.4	3.5	14.8	64.2	21.0	-6.2	0604	18.6	62.6	18.8	-0.2	16.4	61.5	22.1	-5.7
0505	16.1	69.3	14.6	1.5	12.8	65.7	21.5	-8.7	0605	18.3	62.0	19.7	-1.4	14.5	62.7	22.8	-8.3
0506	15.0	68.2	16.8	-1.8	14.5	67.7	17.8	-3.3	0606	15.8	62.9	21.3	-5.5	14.6	64.6	20.8	-6.2
0507	19.8	62.3	17.9	1.9	14.6	65.4	20.0	-5.4	0607	17.8	63.5	18.7	-0.9	14.6	66.5	18.9	-4.3
0508	18.6	60.9	20.5	-1.9	15.9	64.6	19.5	-3.6	0608	18.4	63.7	17.9	0.5	15.2	64.1	20.7	-5.5
0509	17.1	61.0	21.9	-4.8	14.5	66.0	19.5	-5.0	0609	16.1	66.4	17.5	-1.4	15.6	67.8	16.6	-1.0
0510	17.4	64.2	18.4	-1.0	10.7	67.0	22.3	-11.6	0610	17.4	65.5	17.1	0.3	16.4	64.0	19.6	-3.2
0511	14.3	69.2	16.5	-2.2	13.3	67.7	19.0	-5.7	0611	18.6	64.3	17.1	1.5	18.6	65.3	16.1	2.5
0512	20.3	62.3	17.4	2.9	16.4	61.8	21.8	-5.4	0612	19.0	64.2	16.8	2.2	16.0	65.8	18.2	-2.2



21- Average unit cost:

(A=UP, B=SAME, C=DOWN)

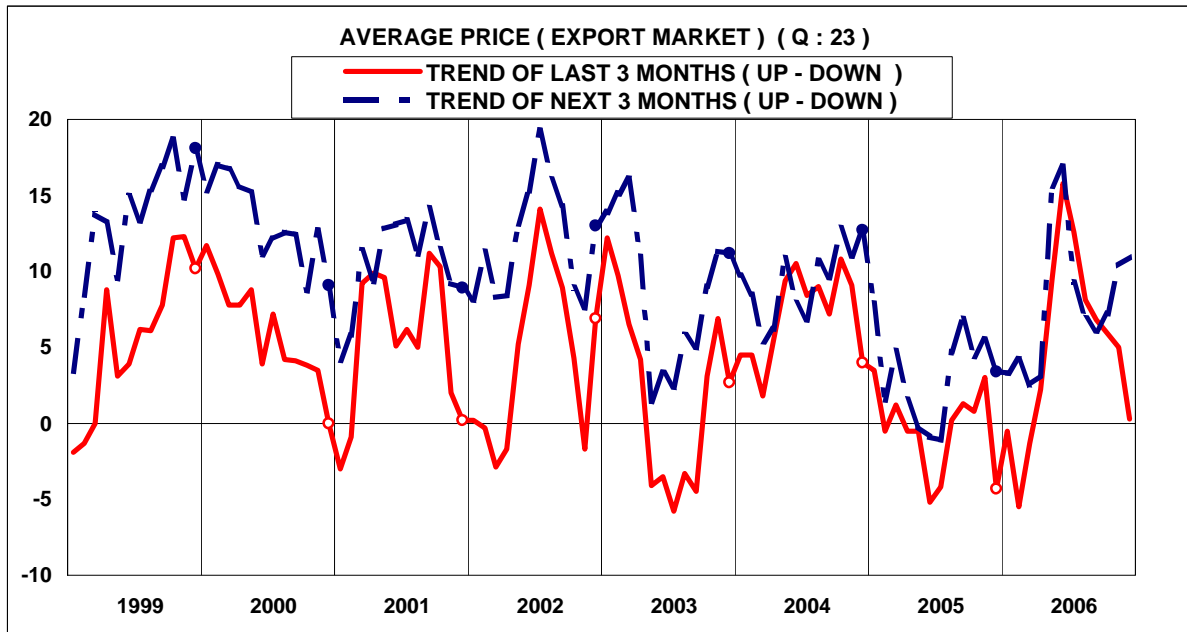
MONTHS	TREND OF LAST 3 MONTHS				TREND OF NEXT 3 MONTHS				TREND OF LAST 3 MONTHS				TREND OF NEXT 3 MONTHS				
	PERCENT			A-C	PERCENT			A-C	PERCENT			A-C	PERCENT			A-C	
A	B	C	A		B	C	A		B	C	A		B	C			
0501	41.3	52.1	6.6	34.7	44.9	48.1	7.0	37.9	0601	16.7	52.9	8.3	30.5	39.3	52.8	7.9	31.4
0502	38.9	51.9	9.2	29.7	38.9	52.3	8.8	30.1	0602	37.2	55.3	7.5	29.7	43.8	48.0	8.2	35.6
0503	43.0	49.6	7.4	35.6	37.4	54.1	9.8	26.3	0603	42.5	51.0	6.5	36.0	39.6	49.4	11.0	28.6
0504	39.8	53.5	6.7	33.1	38.7	52.9	8.4	30.3	0604	39.8	54.0	6.2	33.6	38.5	52.5	9.0	29.5
0505	38.2	54.3	7.5	30.7	33.6	56.5	9.9	23.7	0605	47.4	44.2	8.4	39.0	54.4	37.7	7.9	46.5
0506	31.1	58.6	10.3	20.8	33.3	53.5	13.2	20.1	0606	54.2	40.2	5.6	48.6	59.3	34.1	6.6	52.7
0507	31.5	56.8	11.7	19.8	34.7	57.0	8.3	26.4	0607	61.6	32.1	6.3	55.3	52.8	42.3	4.9	47.9
0508	35.8	54.1	10.1	25.7	40.1	53.1	6.8	33.3	0608	48.1	45.2	6.7	41.4	45.4	48.3	6.3	39.1
0509	37.2	54.7	8.1	29.1	38.6	57.0	4.4	34.2	0609	49.4	45.8	4.8	44.6	47.1	49.0	3.9	43.2
0510	38.9	53.3	7.8	31.1	40.1	53.1	6.8	33.3	0610	40.4	52.7	6.9	33.5	45.6	49.6	4.8	40.8
0511	35.3	57.2	7.5	27.8	39.9	53.6	6.5	33.4	0611	41.9	52.4	5.7	36.2	46.9	48.8	4.3	42.6
0512	30.4	61.6	8.0	22.4	40.2	52.3	7.5	32.7	0612	42.1	50.2	7.7	34.4	45.6	49.6	4.8	40.8



22- Average price for new orders received from the domestic market:

(A=UP, B=SAME, C=DOWN)

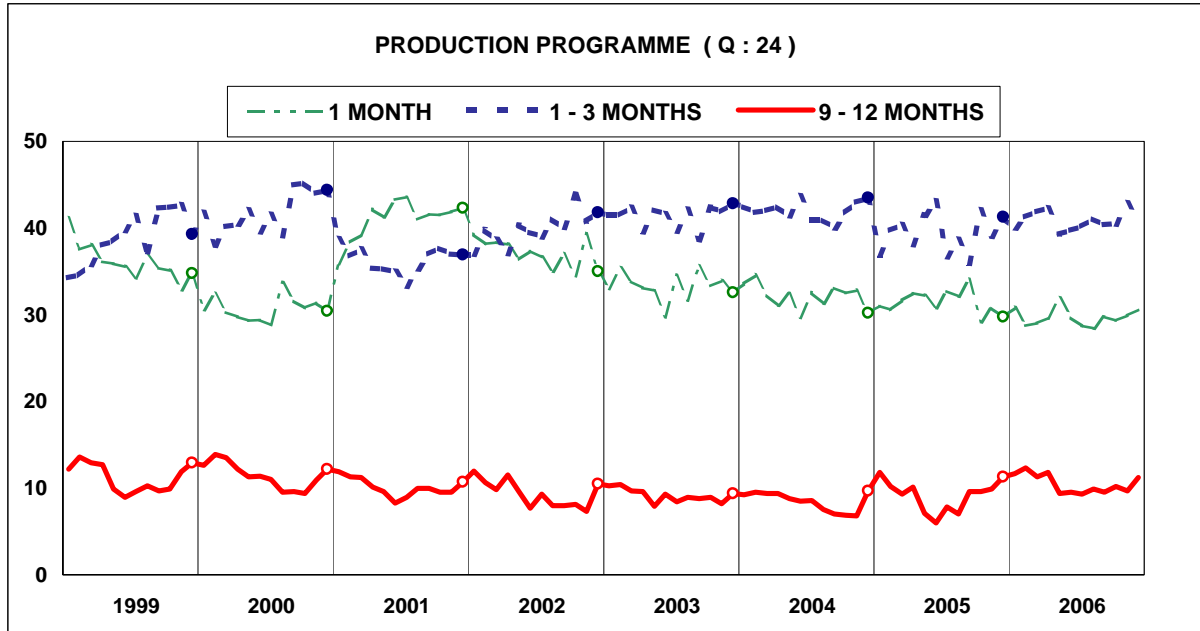
MONTHS	TREND OF LAST 3 MONTHS				TREND OF NEXT 3 MONTHS				MONTHS	TREND OF LAST 3 MONTHS				TREND OF NEXT 3 MONTHS			
	PERCENT			A-C	PERCENT			A-C		PERCENT			A-C	PERCENT			A-C
A	B	C	A		B	C	A		B	C	A	B		C	A	B	
0501	18.3	72.7	9.0	9.3	23.4	68.3	8.3	15.1	0601	16.7	73.2	14.4	-2.0	20.2	68.6	11.2	9.0
0502	18.4	69.4	12.2	6.2	19.1	70.1	10.8	8.3	0602	14.3	71.9	13.8	0.5	22.9	66.7	10.4	12.5
0503	16.8	69.9	13.3	3.5	37.4	67.5	11.7	9.1	0603	18.2	69.8	12.0	6.2	22.5	65.3	12.2	10.3
0504	14.9	71.9	13.2	1.7	19.3	69.7	11.0	8.3	0604	18.6	69.6	11.8	6.8	20.8	69.4	9.8	11.0
0505	15.3	71.6	13.1	2.2	18.7	71.4	9.9	8.8	0605	25.6	66.7	7.7	17.9	36.8	56.5	6.7	30.1
0506	13.5	72.5	14.0	-0.5	16.8	70.8	12.4	4.4	0606	33.7	59.7	6.6	27.1	44.3	47.9	7.8	36.5
0507	12.3	72.3	15.4	-3.1	14.0	71.1	14.9	-0.9	0607	36.4	56.0	7.6	28.8	30.7	61.5	7.8	22.9
0508	13.5	74.7	11.8	1.7	19.3	71.5	9.2	10.1	0608	28.2	64.4	7.4	20.8	22.7	69.7	7.6	15.1
0509	16.5	71.7	11.8	4.7	19.4	71.6	9.0	10.4	0609	25.9	67.4	6.7	19.2	19.9	73.4	6.7	13.2
0510	17.4	70.2	12.4	5.0	17.7	72.6	9.7	8.0	0610	21.7	72.3	6.0	15.7	19.8	71.6	8.6	11.2
0511	10.9	77.4	11.7	-0.8	17.1	72.7	10.2	6.9	0611	19.9	72.6	7.5	12.4	23.5	68.7	7.8	15.7
0512	10.2	77.3	12.5	-2.3	18.0	71.6	10.4	7.6	0612	16.2	74.3	9.5	6.7	26.5	65.7	7.8	18.7



23- Average price for new export orders:

(A=UP, B=SAME, C=DOWN)

MONTHS	TREND OF LAST 3 MONTHS				TREND OF NEXT 3 MONTHS				TREND OF LAST 3 MONTHS				TREND OF NEXT 3 MONTHS				
	PERCENT			A-C	PERCENT			A-C	PERCENT			A-C	PERCENT			A-C	
A	B	C	A		B	C	A		B	C	A		B	C	A		B
0501	14.9	73.7	11.4	3.5	17.9	72.1	10.0	7.9	0601	16.7	75.3	12.6	-0.5	15.9	71.5	12.6	3.3
0502	13.2	73.1	13.7	-0.5	14.9	71.7	13.4	1.5	0602	11.3	71.9	16.8	-5.5	17.3	69.6	13.1	4.2
0503	14.6	72.0	13.4	1.2	37.4	71.8	11.7	4.8	0603	13.4	71.9	14.7	-1.3	15.2	72.1	12.7	2.5
0504	11.1	77.3	11.6	-0.5	13.0	75.6	11.4	1.6	0604	14.5	73.2	12.3	2.2	13.6	76.0	10.4	3.2
0505	11.5	76.5	12.0	-0.5	12.3	75.2	12.5	-0.2	0605	18.7	72.1	9.2	9.5	22.7	70.2	7.1	15.6
0506	11.3	72.2	16.5	-5.2	12.6	73.9	13.5	-0.9	0606	21.6	72.6	5.8	15.8	24.7	67.5	7.8	16.9
0507	10.6	74.6	14.8	-4.2	11.4	76.1	12.5	-1.1	0607	20.9	70.8	8.3	12.6	16.8	75.7	7.5	9.3
0508	11.3	77.6	11.1	0.2	14.5	75.7	9.8	4.7	0608	17.2	73.7	9.1	8.1	16.2	74.5	9.3	6.9
0509	12.9	75.5	11.6	1.3	16.2	74.5	9.3	6.9	0609	15.4	76.0	8.6	6.8	15.2	75.7	9.1	6.1
0510	13.8	73.2	13.0	0.8	16.0	72.4	11.6	4.4	0610	14.4	77.1	8.5	5.9	15.7	75.8	8.5	7.2
0511	11.0	81.0	8.0	3.0	14.9	75.7	9.4	5.5	0611	13.6	77.8	8.6	5.0	18.4	73.6	8.0	10.4
0512	9.1	77.5	13.4	-4.3	15.1	73.2	11.7	3.4	0612	10.1	80.1	9.8	0.3	20.5	70.0	9.5	11.0



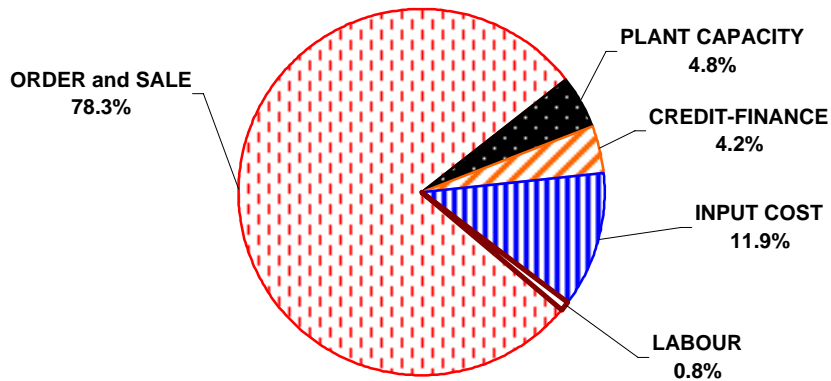
24- According to your existing orders received or production plan, how many months is your production programme ?

(A=1 MONTH, B=1 - 3 MONTHS, C=3 - 6 MONTHS, D=6 - 9 MONTHS, E=9 - 12 MONTHS, F=12 - 18 MONTHS, G=18 - 24 MONTHS)

MONTHS	PERCENT						
	A	B	C	D	E	F	G
0501	31.0	36.9	15.2	2.2	11.8	1.2	1.7
0502	30.6	39.7	12.5	3.0	10.2	37.4	2.6
0503	31.7	40.3	9.9	5.3	9.3	1.3	2.2
0504	32.5	38.0	11.0	5.3	10.1	1.1	2.0
0505	32.2	41.5	10.0	5.7	7.1	1.4	2.1
0506	30.8	43.1	10.5	6.0	6.0	1.3	2.3
0507	32.7	36.7	13.9	5.4	7.8	0.9	2.6
0508	32.1	38.7	13.5	5.1	7.0	1.7	1.9
0509	34.1	35.9	12.0	5.5	9.6	0.7	2.2
0510	29.2	42.1	11.5	3.9	9.6	1.5	2.2
0511	30.8	39.1	12.3	3.2	9.9	2.5	2.2
0512	29.8	41.3	11.5	2.4	11.3	1.3	2.4

MONTHS	PERCENT						
	A	B	C	D	E	F	G
0601	30.8	40.0	9.2	4.4	11.7	1.2	2.7
0602	28.7	41.3	11.6	2.7	12.3	1.0	2.4
0603	29.0	41.9	10.8	3.0	11.3	1.2	2.8
0604	29.6	42.3	9.9	4.2	11.8	0.4	1.8
0605	31.9	39.3	11.8	5.0	9.4	0.7	1.9
0606	29.7	39.7	11.0	7.2	9.5	0.7	2.2
0607	28.7	40.2	12.5	5.6	9.3	1.2	2.5
0608	28.4	41.1	13.3	4.1	9.9	1.1	2.1
0609	29.8	40.4	12.5	4.5	9.5	1.4	1.9
0610	29.3	40.5	14.1	3.2	10.2	0.7	2.0
0611	29.9	42.8	11.2	3.2	9.7	1.7	1.5
0612	30.6	40.9	9.3	3.6	11.2	2.2	2.2

**FACTORS WHICH MIGHT LIMIT THE PRODUCTION (Q : 25)
DECEMBER 2006**



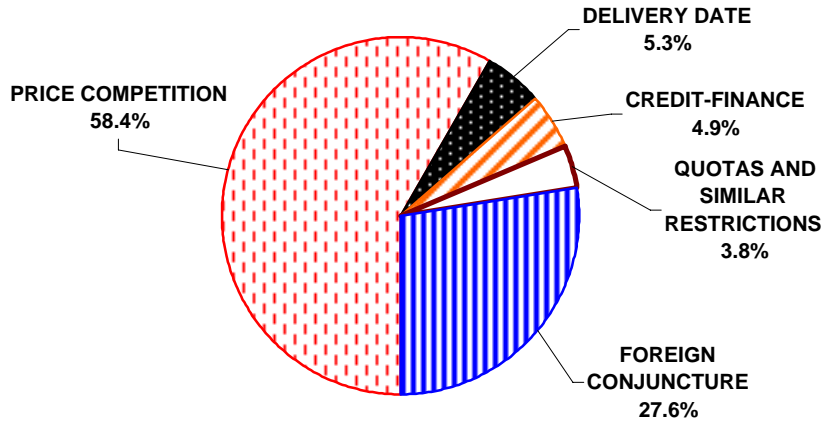
25- Over the next quarter, which factor(s) might limit the production ? Rank according to degree of importance.

(A=ORDER & SALE, B=SKILLED LABOUR, C=UNSKILLED LABOUR, D=PLANT CAPACITY, E=CREDIT-FINANCE, F= INPUT COST)

MONTHS	PERCENT					
	A	B	C	D	E	F
0501	78.6	1.2	0.5	4.1	3.9	11.7
0502	79.0	1.4	0.2	5.2	3.8	37.4
0503	79.7	1.3	0.0	4.3	4.5	10.2
0504	79.3	0.8	0.4	4.1	4.5	10.9
0505	78.9	0.4	0.7	3.3	5.7	11.0
0506	80.5	0.2	0.0	5.2	3.2	10.9
0507	79.2	0.7	0.5	5.3	5.5	8.8
0508	79.1	0.8	0.5	3.3	5.9	10.4
0509	78.1	1.3	0.2	4.7	4.7	11.0
0510	77.3	1.2	0.5	4.1	5.0	11.9
0511	79.1	0.8	0.5	5.0	4.3	10.3
0512	80.4	0.4	0.0	3.6	4.1	11.5

MONTHS	PERCENT					
	A	B	C	D	E	F
0601	80.9	0.8	0.2	2.1	5.4	10.6
0602	76.2	0.8	0.5	4.2	5.4	12.9
0603	78.7	0.8	0.7	3.6	4.5	11.7
0604	78.5	0.5	0.6	4.9	5.2	10.3
0605	75.0	0.7	0.2	5.1	6.1	12.9
0606	73.3	0.8	0.0	5.4	5.7	14.8
0607	74.2	1.1	0.2	5.2	4.8	14.5
0608	75.1	0.9	0.0	6.1	5.8	12.1
0609	76.4	0.0	0.0	4.5	4.1	15.0
0610	78.7	0.7	0.0	5.5	3.8	11.3
0611	77.4	1.2	0.2	6.2	4.3	10.7
0612	78.3	0.8	0.0	4.8	4.2	11.9

**FACTORS WHICH MIGHT LIMIT EXPORT ORDERS (Q : 26)
DECEMBER 2006**



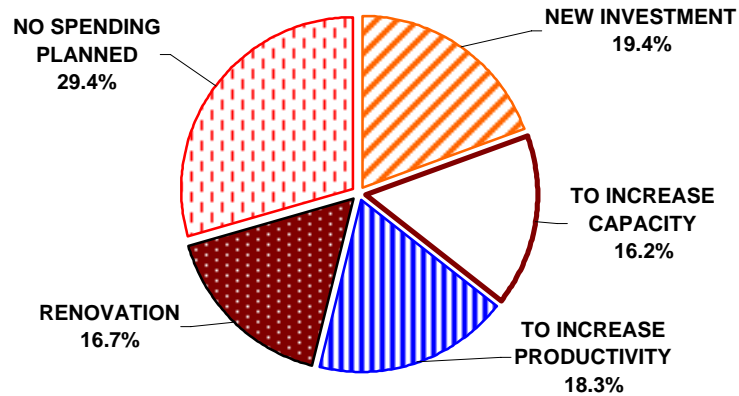
26- Over the next quarter, which factor(s) might limit your export orders ? Rank according to degree of importance:

(A=PRICE COMPETITION, B=DELIVERY DATE, C=CREDIT-FINANCE, D=QUOTAS AND SIMILAR RESTRICTIONS, E= FOREIGN CONJUNCTURE)

MONTHS	PERCENT				
	A	B	C	D	E
0501	59.0	5.1	4.9	5.1	25.9
0502	59.9	7.1	5.2	4.5	23.3
0503	64.3	4.3	4.3	4.5	22.6
0504	59.2	5.8	4.7	4.2	26.1
0505	61.2	5.0	6.8	4.1	22.9
0506	59.9	6.2	4.9	5.7	23.3
0507	57.1	5.3	5.7	3.9	28.0
0508	59.3	5.2	5.5	4.5	25.5
0509	58.5	6.6	4.1	5.2	25.6
0510	59.3	5.7	5.4	4.3	25.3
0511	62.0	6.1	5.3	5.5	21.1
0512	63.5	5.9	3.6	4.2	22.8

MONTHS	PERCENT				
	A	B	C	D	E
0601	62.7	5.4	6.1	4.6	21.2
0602	63.9	5.1	6.4	4.9	19.7
0603	64.5	5.9	5.1	5.9	18.6
0604	64.5	4.9	4.5	4.5	21.6
0605	61.7	4.9	5.2	3.6	24.6
0606	61.4	6.6	7.0	3.8	21.2
0607	57.5	6.1	6.0	5.5	24.9
0608	60.8	5.0	7.1	5.2	21.9
0609	62.4	4.9	4.8	4.8	23.1
0610	61.9	6.4	5.0	4.5	22.2
0611	61.1	6.0	5.7	6.2	21.0
0612	58.4	5.3	4.9	3.8	27.6

**REASONS FOR PLANNED INVESTMENT EXPENDITURES (Q : 27)
DECEMBER 2006**



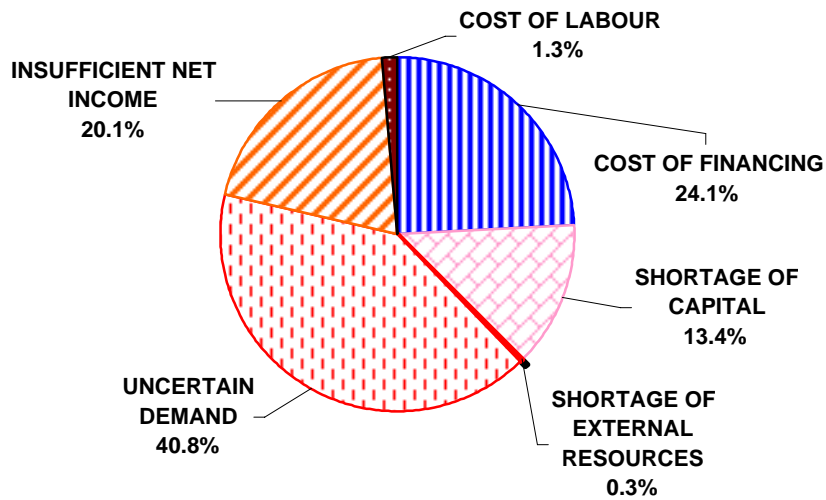
27- Over the next twelve months, what is the main reason for the planned expenditures on building, plant or equipment ? Rank according to degree of importance.

(A=NEW INVESTMENT, B=TO INCREASE CAPACITY, C=TO INCREASE PRODUCTIVITY, D=RENOVATION, E= NO SPENDING PLANNED)

MONTHS	PERCENT				
	A	B	C	D	E
0501	19.3	11.6	26.1	13.7	29.3
0502	18.0	13.5	25.7	12.5	30.3
0503	16.8	12.6	22.7	15.9	32.0
0504	15.1	11.7	26.3	14.5	32.4
0505	16.1	14.7	24.4	13.9	30.9
0506	18.0	12.4	21.8	13.8	34.0
0507	19.6	15.5	24.4	13.8	26.7
0508	19.9	13.0	20.1	15.6	31.4
0509	19.4	15.6	18.2	16.5	30.3
0510	20.0	12.9	22.7	14.9	29.5
0511	21.6	14.9	21.8	13.8	27.9
0512	17.6	14.9	25.1	16.3	26.1

MONTHS	PERCENT				
	A	B	C	D	E
0601	17.6	12.5	23.3	15.8	30.8
0602	17.1	13.9	23.5	14.2	31.3
0603	17.5	15.0	23.5	16.4	27.6
0604	19.5	14.1	23.0	14.7	28.7
0605	17.5	15.9	20.6	14.5	31.5
0606	15.3	16.7	25.4	12.6	30.0
0607	17.2	14.3	22.3	15.6	30.6
0608	17.7	16.8	22.7	12.9	29.9
0609	21.6	14.7	22.5	12.8	28.4
0610	21.2	15.1	20.0	15.9	27.8
0611	19.8	13.9	22.4	13.5	30.4
0612	19.4	16.2	18.3	16.7	29.4

**FACTORS WHICH MIGHT LIMIT INVESTMENT EXPENDITURES (Q : 28)
DECEMBER 2006**

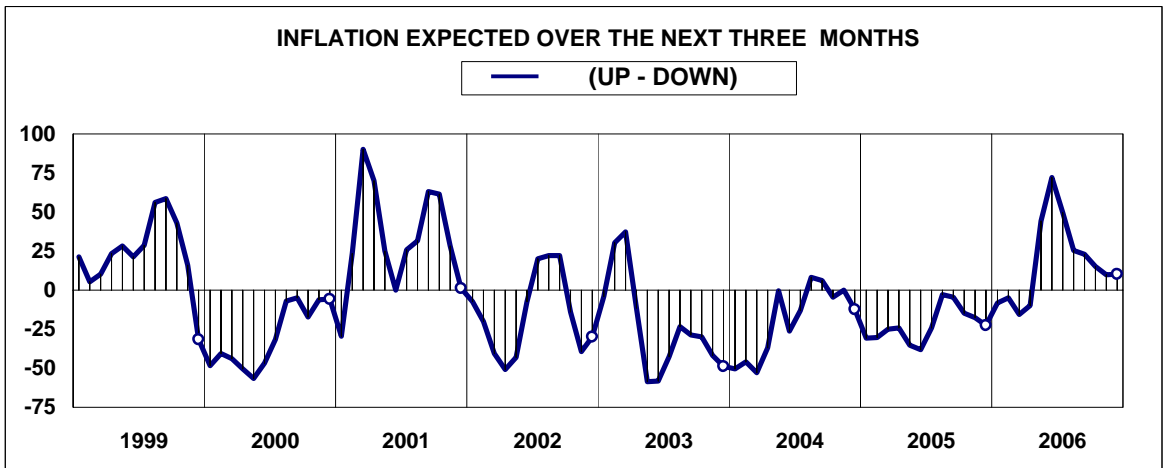
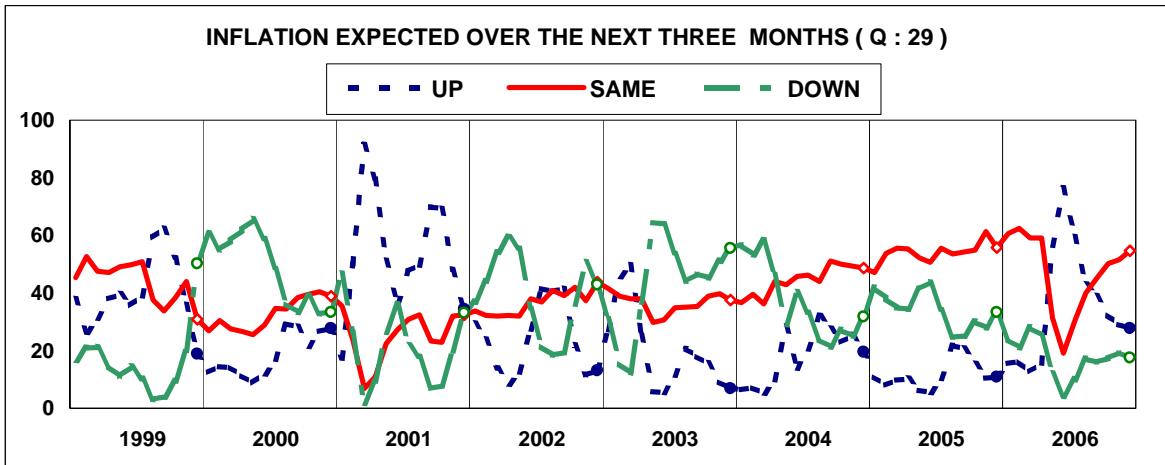


28- Which factor(s) might limit the realization of these expenditures on building, plant or equipment?
Rank according to degree of importance.

(A=COST OF FINANCING, B=SHORTAGE OF CAPITAL, C=SHORTAGE OF EXTERNAL RESOURCES,
D=UNCERTAIN DEMAND, E=INSUFFICIENT NET INCOME, F=COST OF LABOUR)

MONTHS	PERCENT					
	A	B	C	D	E	F
0501	24.9	12.3	1.4	44.1	14.8	2.5
0502	21.4	15.3	1.8	41.4	17.2	2.9
0503	22.3	14.3	1.8	42.7	16.8	2.1
0504	22.6	12.3	1.3	46.7	15.6	1.5
0505	21.9	11.9	1.3	49.0	14.1	1.8
0506	26.2	11.4	2.0	43.6	14.8	2.0
0507	22.9	13.6	1.3	45.1	14.8	2.3
0508	24.6	12.9	.8	45.6	15.3	0.8
0509	22.2	14.5	1.4	43.0	17.5	1.4
0510	23.6	11.8	1.1	45.4	16.7	1.4
0511	27.6	10.4	1.1	39.8	19.2	1.9
0512	25.9	13.8	.9	44.1	13.5	1.8

MONTHS	PERCENT					
	A	B	C	D	E	F
0601	23.4	12.3	1.1	41.5	19.0	2.7
0602	21.8	14.8	0.8	37.6	21.5	3.5
0603	24.2	11.0	1.8	40.1	19.6	3.3
0604	22.0	14.7	1.7	40.6	17.6	3.4
0605	25.5	12.7	1.4	37.1	20.3	3.0
0606	27.9	11.1	0.9	41.0	17.1	2.0
0607	22.7	11.6	1.4	43.5	18.1	2.7
0608	24.1	9.7	1.1	42.1	20.1	2.9
0609	25.1	9.8	0.5	41.7	20.3	2.6
0610	20.8	14.5	0.8	40.0	21.4	2.5
0611	25.3	12.0	1.4	39.6	18.4	3.3
0612	24.1	13.4	0.3	40.8	20.1	1.3

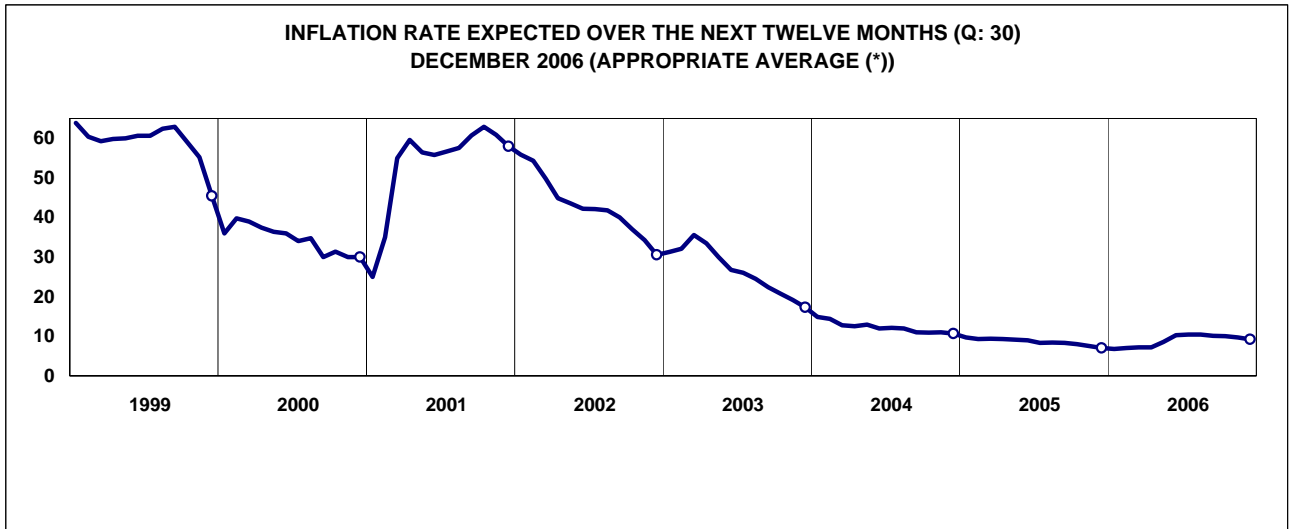


29- Over the next three months, what is your expectation for inflation (producer prices) ?

(A=UP, B=SAME, C=DOWN)

MONTHS	PERCENT			A-C
	A	B	C	
0501	11.0	47.1	41.9	-30.9
0502	8.0	53.7	38.3	-30.3
0503	9.7	55.5	34.8	-25.1
0504	10.2	55.4	34.4	-24.2
0505	6.3	52.3	41.4	-35.1
0506	5.5	50.7	43.8	-38.3
0507	10.2	55.6	34.2	-24.0
0508	21.8	53.5	24.7	-2.9
0509	20.7	54.2	25.1	-4.4
0510	15.3	54.8	29.9	-14.6
0511	10.5	61.4	28.1	-17.6
0512	10.9	55.7	33.4	-22.5

MONTHS	PERCENT			A-C
	A	B	C	
0601	15.6	60.6	23.8	-8.2
0602	16.3	62.5	21.2	-4.9
0603	12.7	59.2	28.1	-15.4
0604	15.5	59.2	25.3	-9.8
0605	56.4	31.4	12.2	44.2
0606	76.5	19.2	4.3	72.2
0607	59.6	30.5	9.9	49.7
0608	42.8	40.0	17.2	25.6
0609	38.8	45.2	16.0	22.8
0610	32.4	50.2	17.4	15.0
0611	29.1	51.5	19.4	9.7
0612	27.8	54.6	17.6	10.2

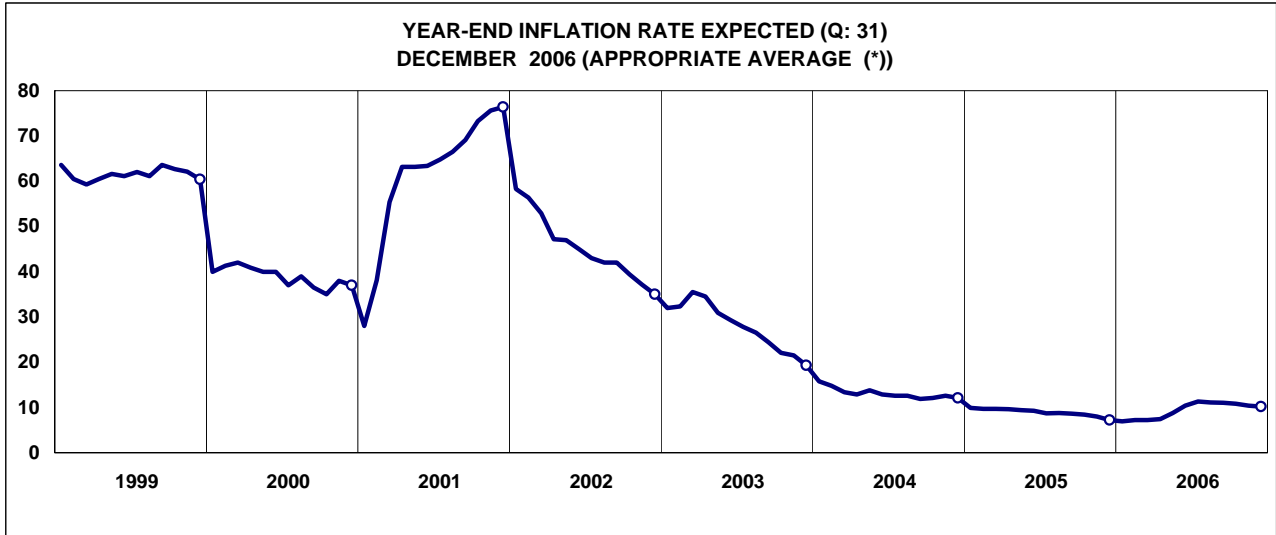


30- Over the next twelve months, what is your expectation for inflation (producer prices) rate ?

Descriptive Statistics

MONTHS	Num. Of Observ.	Min	Max	Standard Deviation	Arithmetic Mean	Median	Mode	Appropriate Average (*)
0512	372	2.0	25.0	2.6	7.3	7.0	5.0	7.0
0601	407	2.0	19.0	2.3	7.1	7.0	6.0	6.8
0602	411	2.0	18.0	2.2	7.2	7.0	8.0	7.0
0603	426	2.0	17.5	2.2	7.3	7.0	7.0	7.2
0604	448	2.0	17.5	2.1	7.3	7.0	7.0	7.2
0605	414	2.0	35.0	3.3	8.9	8.0	8.0	8.6
0606	396	5.0	35.0	3.3	10.6	10.0	10.0	10.3
0607	433	5.0	25.0	2.9	37.4	10.0	10.0	10.4
0608	430	3.0	35.0	3.0	10.8	10.0	10.0	10.4
0609	423	3.0	25.0	2.8	10.4	10.0	10.0	10.1
0610	405	5.0	21.0	2.5	10.2	10.0	10.0	10.0
0611	408	4.0	25.0	2.5	10.0	9.8	10.0	9.7
0612	360	4.0	27.0	2.8	9.6	9.0	10.0	9.2

(*) The appropriate average is selected according to the comparison of arithmetic mean, median, mode and alpha-trimmed mean.

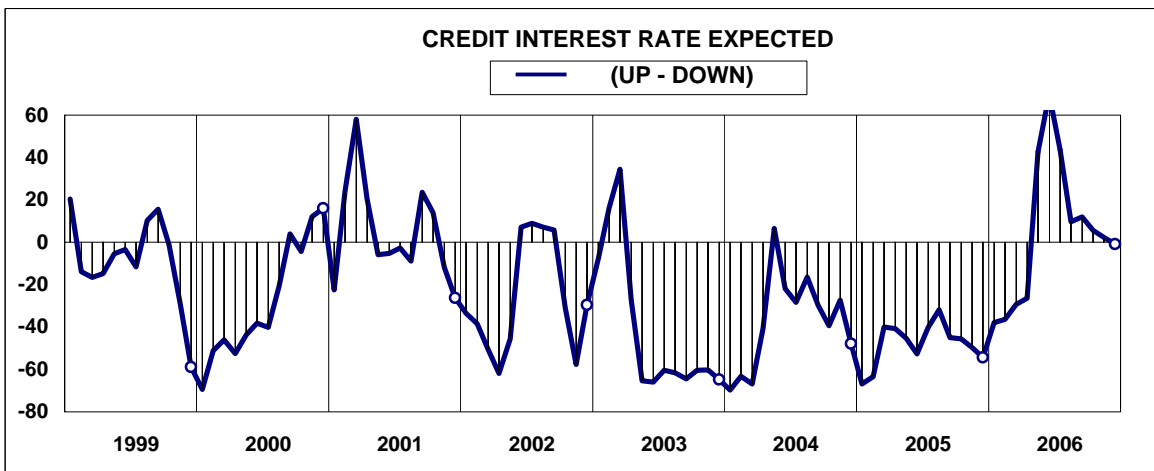
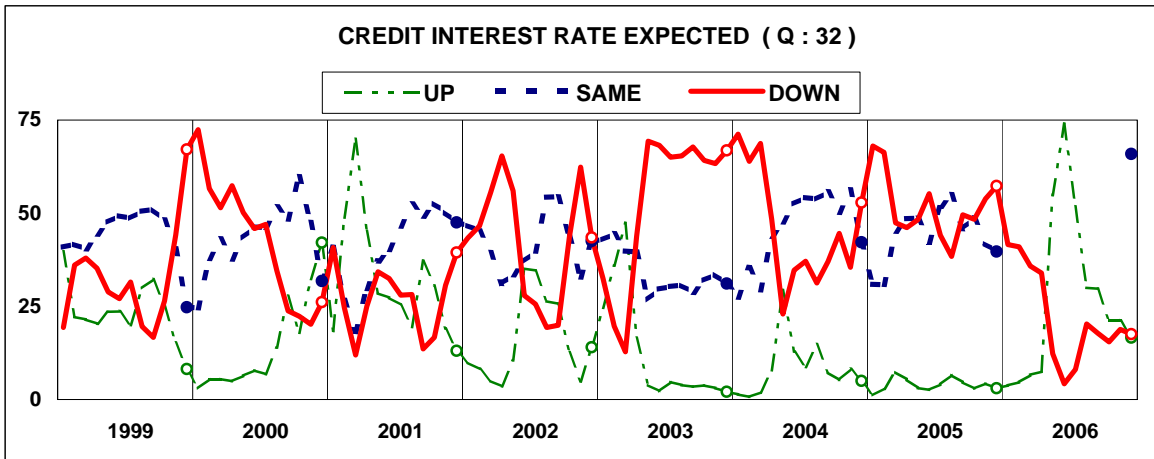


31- What is your expectation for year-end inflation (producer prices) rate ?

Descriptive Statistics

MONTHS	Num. Of Observ.	Min	Max	Standard Deviation	Arithmetic Mean	Median	Mode	Appropriate Average (*)
0512	371	2.0	22.0	2.8	7.5	8.0	8.0	7.2
0601	404	2.0	20.0	2.3	7.2	7.0	7.0	6.9
0602	411	3.0	19.0	2.2	7.3	7.0	7.0	7.2
0603	426	2.0	18.0	2.0	7.3	7.0	7.0	7.2
0604	446	3.0	18.0	2.0	7.5	7.0	7.0	7.4
0605	411	3.0	30.0	3.1	9.1	8.0	8.0	8.8
0606	395	6.0	35.0	3.1	10.9	10.0	10.0	10.4
0607	433	5.0	21.0	2.6	37.4	11.0	12.0	11.3
0608	430	5.0	35.0	2.7	11.4	11.0	12.0	11.1
0609	422	2.8	30.0	2.3	11.1	11.0	10.0	11.0
0610	404	6.0	20.0	1.9	10.9	10.5	10.0	10.8
0611	407	5.0	20.0	1.8	10.6	10.0	10.0	10.4
0612	361	6.0	25.0	2.0	10.3	10.0	10.0	10.2

(*) The appropriate average is selected according to the comparison of arithmetic mean, median, mode and alpha-trimmed mean.

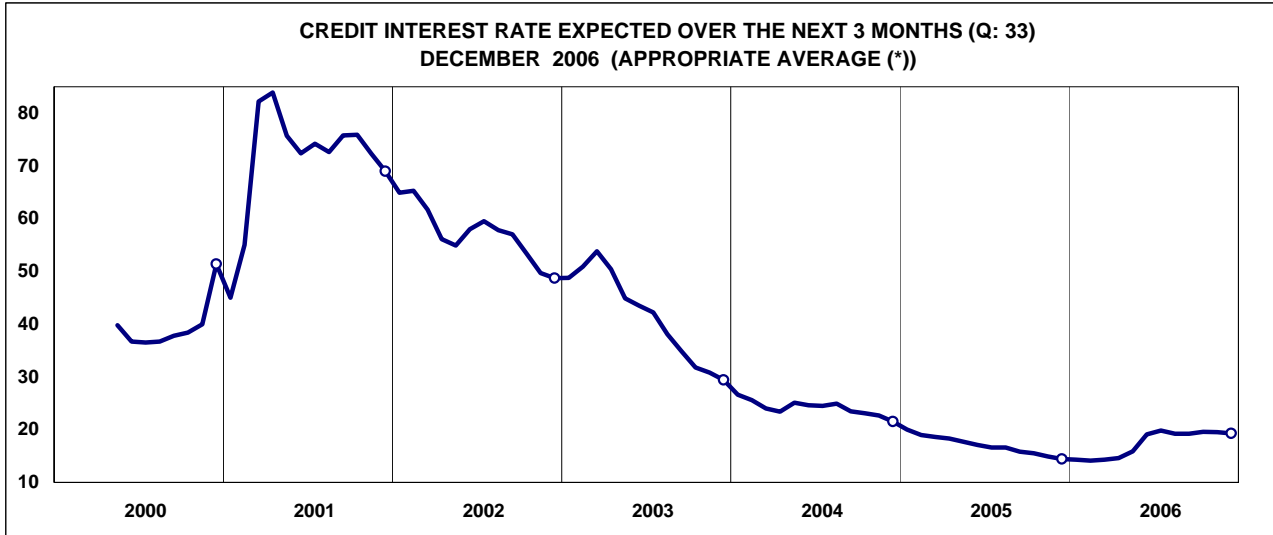


32- Over the next three months, what is your expectation for short term Turkish Lira credit interest rate ?

(A=UP, B=SAME, C=DOWN)

MONTHS	PERCENT			A-C
	A	B	C	
0501	1.1	30.9	68.0	-66.9
0502	2.9	30.8	66.3	-63.4
0503	7.4	45.2	47.4	-40.0
0504	5.4	48.5	46.1	-40.7
0505	3.1	48.6	48.3	-45.2
0506	2.6	42.2	55.2	-52.6
0507	4.0	51.9	44.1	-40.1
0508	6.6	55.0	38.4	-31.8
0509	4.6	45.8	49.6	-45.0
0510	2.9	48.7	48.4	-45.5
0511	4.3	41.8	53.9	-49.6
0512	3.0	39.7	57.3	-54.3

MONTHS	PERCENT			A-C
	A	B	C	
0601	3.8	54.6	41.6	-37.8
0602	4.6	54.4	41.0	-36.4
0603	6.6	57.6	35.8	-29.2
0604	7.5	58.6	33.9	-26.4
0605	54.9	32.8	12.3	42.6
0606	74.0	21.8	4.2	69.8
0607	51.8	40.1	8.1	43.7
0608	30.0	49.7	20.3	9.7
0609	29.7	52.5	17.8	11.9
0610	21.1	63.4	15.5	5.6
0611	21.3	60.2	18.5	2.8
0612	16.6	65.9	17.5	-0.9

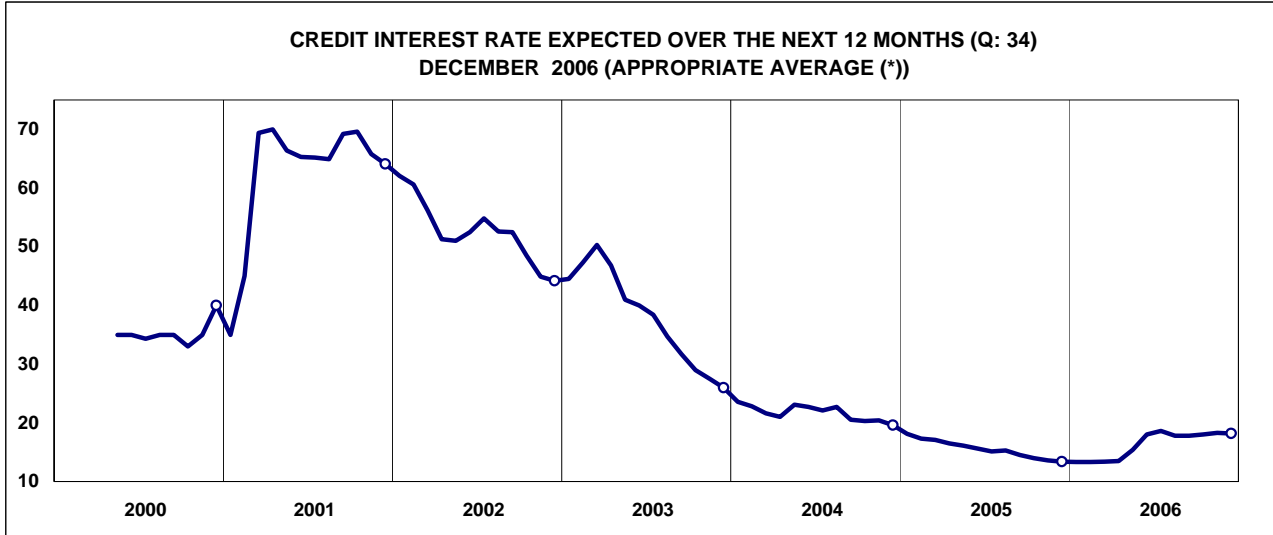


33- Over the next 3 months what is your expectation for short term Turkish Lira credit interest rate?

Descriptive Statistics

MONTHS	Num. Of Observ.	Min	Max	Standard Deviation	Arithmetic Mean	Median	Mode	Appropriate Average (*)
0512	359	3.5	30.0	3.4	14.6	14.0	14.0	14.4
0601	390	3.0	35.0	3.6	14.5	14.0	15.0	14.3
0602	396	3.5	28.0	3.4	14.3	14.0	13.0	14.1
0603	408	3.5	30.0	3.4	14.4	14.0	14.0	14.3
0604	428	5.0	28.0	3.3	14.6	14.0	14.0	14.6
0605	395	6.0	40.0	3.9	16.3	16.0	15.0	15.9
0606	384	6.0	30.0	4.3	19.0	19.0	20.0	19.1
0607	409	6.0	35.0	4.5	37.4	20.0	20.0	19.8
0608	410	7.0	40.0	4.3	19.3	19.0	20.0	19.2
0609	404	7.0	31.0	4.1	19.2	20.0	20.0	19.2
0610	383	7.0	40.0	4.2	19.7	20.0	20.0	19.6
0611	389	7.0	40.0	4.1	19.5	20.0	20.0	19.5
0612	342	7.0	36.0	4.3	19.4	20.0	20.0	19.3

(*) The appropriate average is selected according to the comparison of arithmetic mean, median, mode and alpha-trimmed mean.



34- Over the next 12 months what is your expectation for short term Turkish Lira credit interest rate?

Descriptive Statistics

MONTHS	Num. Of Observ.	Min	Max	Standard Deviation	Arithmetic Mean	Median	Mode	Appropriate Average (*)
0512	358	5.0	32.0	3.7	13.4	13.0	12.0	13.4
0601	390	4.2	35.0	3.7	13.4	13.0	12.0	13.3
0602	397	4.5	28.0	3.5	13.3	13.0	12.0	13.3
0603	408	6.0	28.0	3.5	13.5	13.0	12.0	13.4
0604	430	5.0	29.0	3.3	13.7	13.0	12.0	13.5
0605	395	6.0	40.0	4.0	15.6	15.0	15.0	15.4
0606	383	5.0	35.0	4.6	18.3	18.0	20.0	18.0
0607	406	6.0	40.0	4.5	37.4	18.9	20.0	18.6
0608	408	8.0	40.0	4.4	18.2	18.0	18.0	17.8
0609	401	7.0	35.0	4.2	18.1	18.0	18.0	17.8
0610	380	7.0	40.0	4.4	18.5	18.0	18.0	18.0
0611	386	8.0	40.0	4.5	18.5	18.0	18.0	18.3
0612	341	8.0	36.0	4.6	18.3	18.0	20.0	18.2

(*) The appropriate average is selected according to the comparison of arithmetic mean, median, mode and alpha-trimmed mean.