

CENTRAL BANK OF THE REPUBLIC OF TURKEY



**INVESTMENT SURVEY
SPRING-2011
(NACE REV.2)**

**DEPARTMENT OF STATISTICS
REAL SECTOR DATA DIVISION**

APRIL 26, 2011

CONTENTS

<u>QUESTIONS</u>	<u>PAGE NUMBER</u>
Responses	2
1. Percentage change in investment last year (2010) on investment two years ago (2009)	3
2. Percentage change in investment this year (2011) on investment last year (2010)	3

INVESTMENT SURVEY MONTHLY RESPONSES

S E C T O R S	2011-Spring		
	Participants	Responses	Response Rate (%)
10 Manufacture of food products	249	220	88.4
11 Manufacture of beverages	17	16	94.1
12 Manufacture of tobacco products	11	11	100.0
13 Manufacture of textiles	306	256	83.7
14 Manufacture of wearing apparel	253	203	80.2
15 Manufacture of leather and related products	53	37	69.8
16 Manufacture of wood and of products of wood and cork, except furniture	47	36	76.6
17 Manufacture of paper and paper products	67	59	88.1
18 Printing and reproduction of recorded media	20	17	85.0
19 Manufacture of coke and refined petroleum products	11	10	90.9
20 Manufacture of chemicals and chemical products	80	63	78.8
21 Manufacture of basic pharmaceutical products and pharmaceutical preparations	17	16	94.1
22 Manufacture of rubber and plastic products	111	92	82.9
23 Manufacture of other non-metallic mineral products	222	178	80.2
24 Manufacture of basic metals	99	80	80.8
25 Manufacture of fabricated metal products, except machinery and equipment	210	155	73.8
26 Manufacture of computer, electronic and optical products	49	39	79.6
27 Manufacture of electrical equipment	97	75	77.3
28 Manufacture of machinery and equipment n.e.c.	136	107	78.7
29 Manufacture of motor vehicles, trailers and semi-trailers	100	82	82.0
30 Manufacture of other transport equipment	22	19	86.4
31 Manufacture of furniture	52	41	78.8
32 Other manufacturing	49	43	87.8
33 Repair and installation of machinery and equipment	12	9	75.0
Total	2290	1864	81.4

INVESTMENT SURVEY WEIGHTED AGGREGATED RESULTS

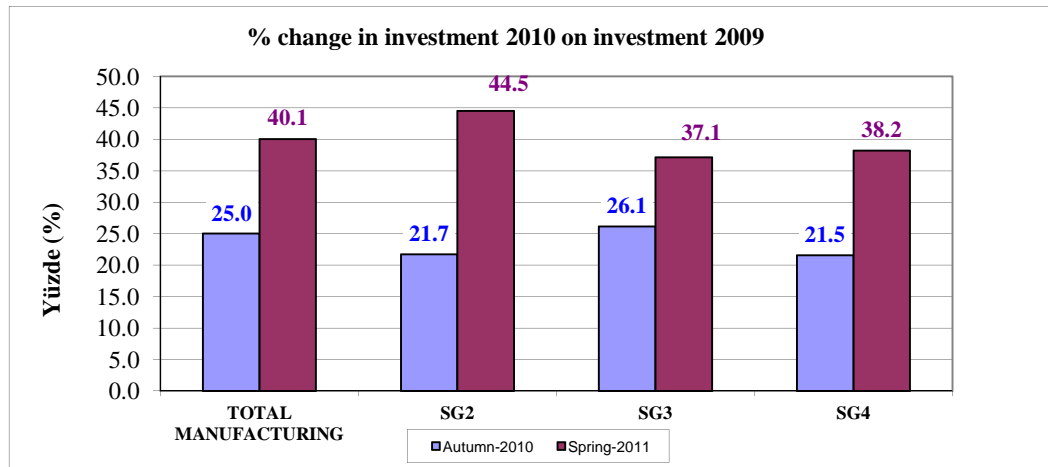
INVESTMENT PLANS:

1- Percentage change in investment last year (2010) on investment two years ago (2009):

	Autumn-2010	Spring-2011
TOTAL MANUFACTURING	% 25.0	% 40.1

SIZE GROUPS (SG):

	Autumn-2010	Spring-2011
SG2 50 < Number of Employees < 250	% 21.7	% 44.5
SG3 250 < Number of Employees < 500	% 26.1	% 37.1
SG4 Number of Employees > 500	% 21.5	% 38.2



2- Percentage change in investment this year (2011) on investment last year (2010):

	Autumn-2010	Spring-2011
TOTAL MANUFACTURING	% 34.6	% 67.8

SIZE GROUPS (SG):

	Autumn-2010	Spring-2011
SG2 50 < Number of Employees < 250	% 16.9	% 26.7
SG3 250 < Number of Employees < 500	% 36.8	% 38.6
SG4 Number of Employees > 500	% 42.9	% 94.1

