

RESIDENTIAL PROPERTY PRICE INDEX

DATA GOVERNANCE AND STATISTICS DEPARTMENT
SURVEYS AND INDICES DIVISION

NOVEMBER 2025



Residential Property Price Index (RPPI)

In November 2025, RPPI increased monthly by **2.7** percent, recorded an annual increase of **31.4** percent in nominal terms and **0.3** percent in real terms.

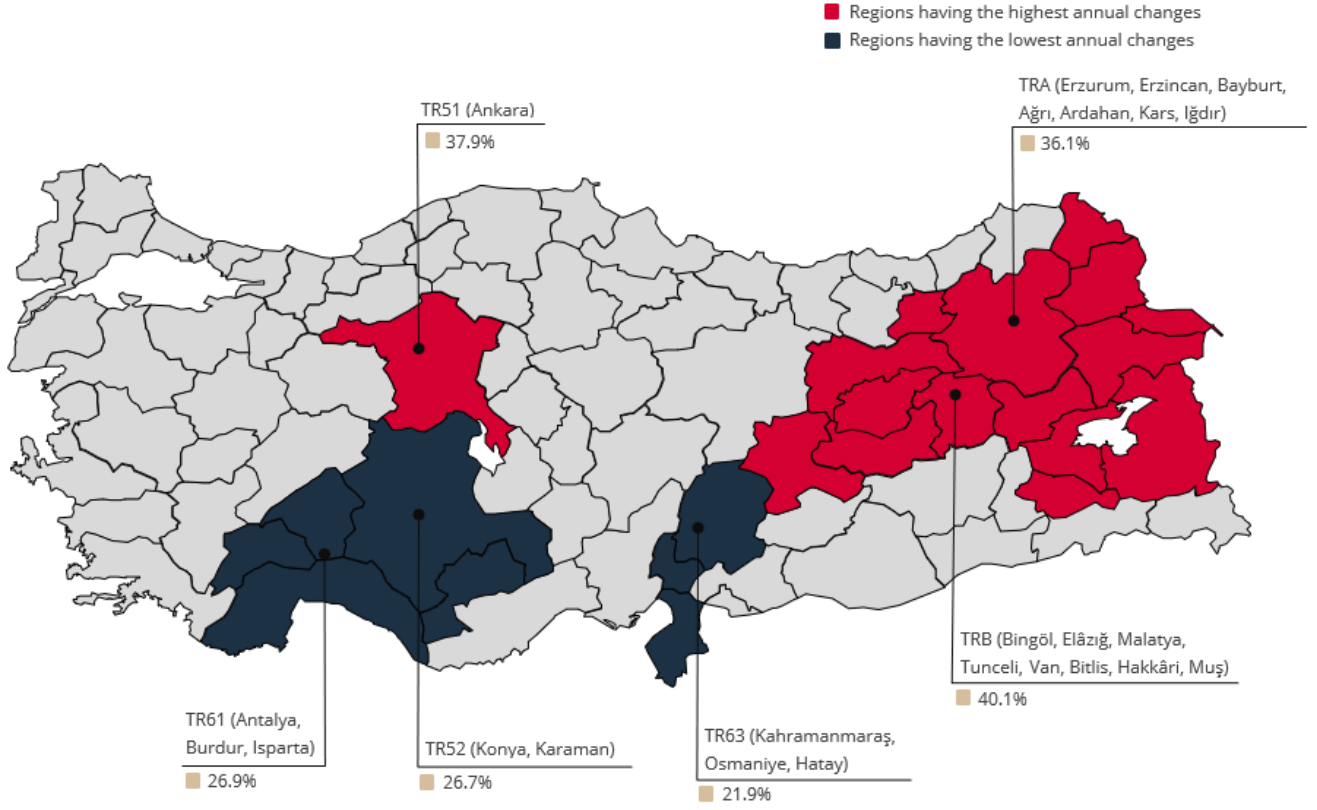





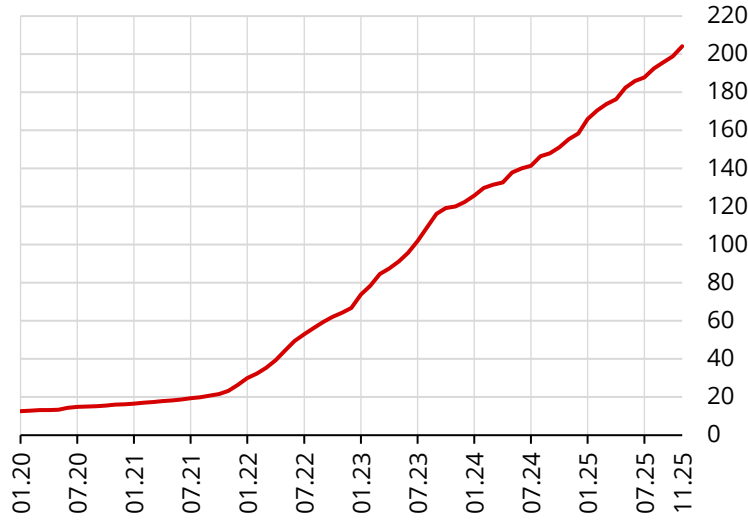
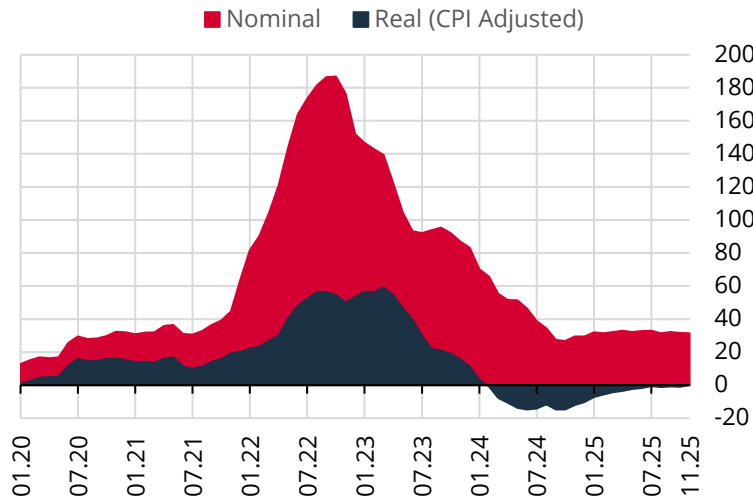


Table 1: Residential Property Price Indices (2023=100)

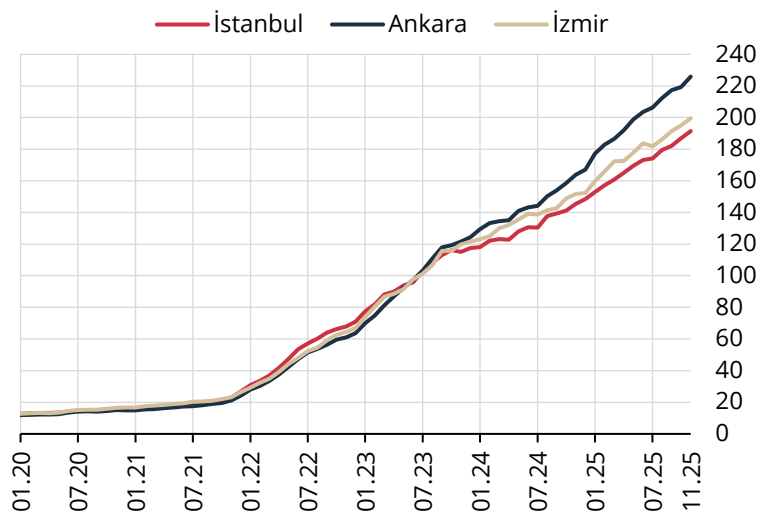
		 TÜRKİYE	 İSTANBUL	 ANKARA	 İZMİR
Residential Property Price Index		204.2	191.5	225.9	199.6
Annual Change		31.4%	31.7%	37.9%	31.6%
Monthly Change		2.7%	2.5%	3.0%	2.4%

Graph 1: Residential Property Price Index (Level, 2023=100)

The Residential Property Price Index (RPPI) (2023=100), which measures quality adjusted price changes of dwellings in Türkiye stands at **204.2** in November 2025 by a monthly increase of **2.7** percent.

Graph 2: Residential Property Price Index (Annual % Change)

The RPPI increased annually by **31.4** percent in nominal terms and by **0.3** percent in real terms.

Graph 3: Residential Property Price Index for Three Major Cities (Level, 2023=100)

In November 2025, the RPPI increased monthly by **2.5**, **3.0** and **2.4** percent in Istanbul, Ankara and İzmir respectively. Istanbul, Ankara and İzmir recorded an annual increase of **31.7**, **37.9** and **31.6** percent respectively.

According to the Nomenclature of Territorial Units for Statistics, in November 2025, the highest annual increase was observed in Bingöl, Elazığ, Malatya, Tunceli, Van, Bitlis, Hakkâri, Muş region with **40.1** percent, while the lowest annual increase was observed in Hatay, Kahramanmaraş, Osmaniye region with **21.9** percent.

Graph 4: Residential Property Price Index by Regions (Annual % Change)

