



RESIDENTIAL PROPERTY PRICE INDEX

DATA GOVERNANCE AND
STATISTICS DEPARTMENT
SURVEYS AND INDICES DIVISION

JUNE 2022

Residential Property Price Index (RPPI)

In June 2022, RPPI increased monthly by **9.0** percent, recorded an annual increase of **160.6** percent in nominal terms and **47.0** percent in real terms.

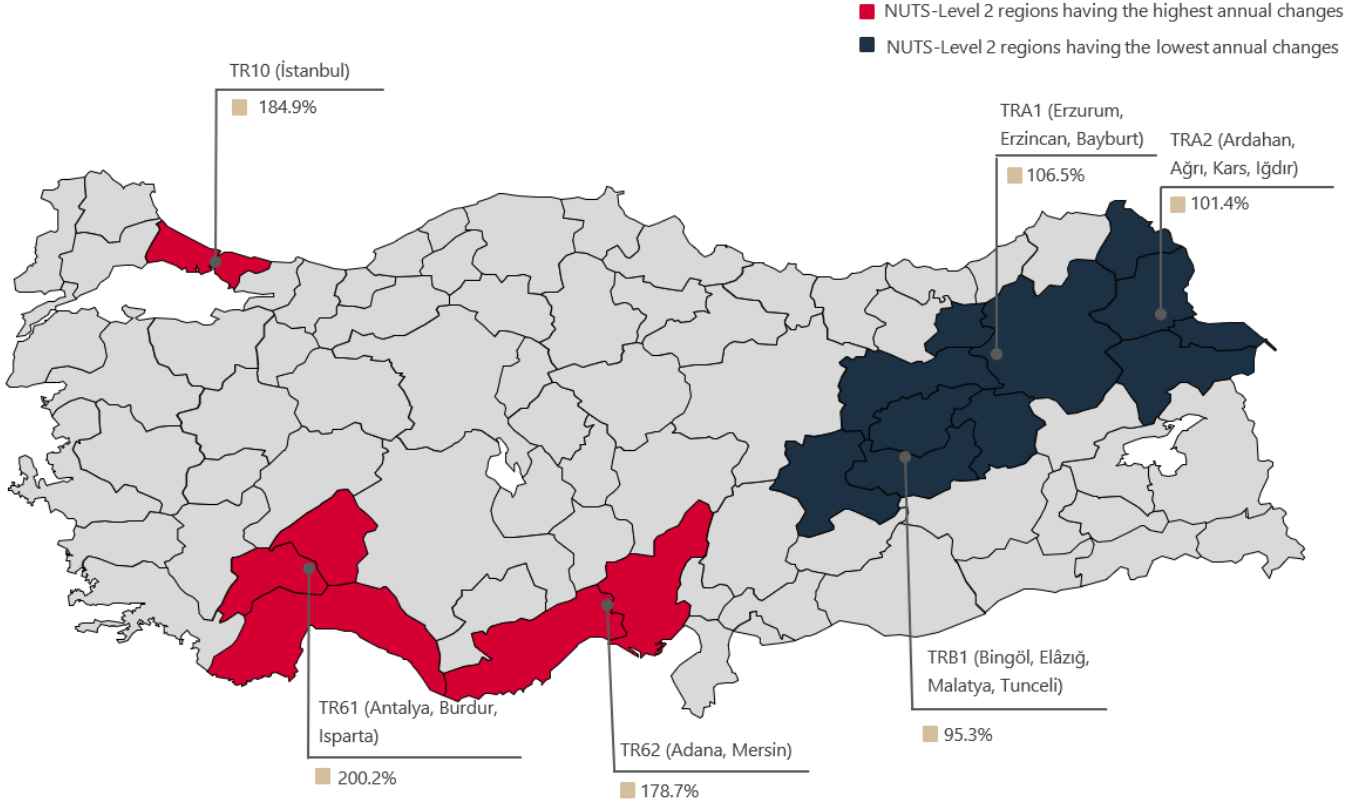


Table 1: Residential Property Price Indices (2017=100) and Unit Prices

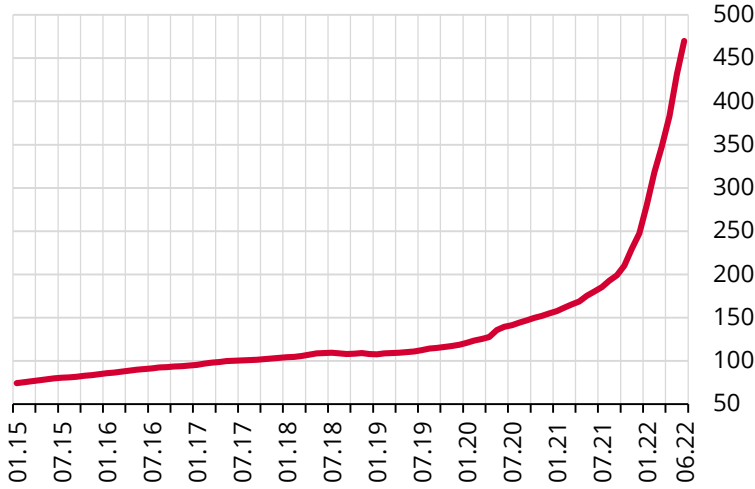
| | Residential Property Price Index | Residential Property Price Index for New Dwellings | Residential Property Price Index for Existing Dwellings | Unit Prices (TL/m ²)* |
|---|----------------------------------|--|---|-----------------------------------|
|  | 469.8 (160.6%) | 508.9 (164.8%) | 463.2 (160.7%) | 13014.3 ₺ |
|  | 435.0 (184.9%) | 493.0 (208.7%) | 434.9 (186.1%) | 21328.6 ₺ |
|  | 451.9 (165.4%) | 560.8 (176.5%) | 443.0 (165.3%) | 9155.0 ₺ |
|  | 481.8 (150.9%) | 504.4 (159.6%) | 473.5 (148.9%) | 14932.7 ₺ |

*Square Meter Prices are constructed by using the **Stratified Median Price** method.

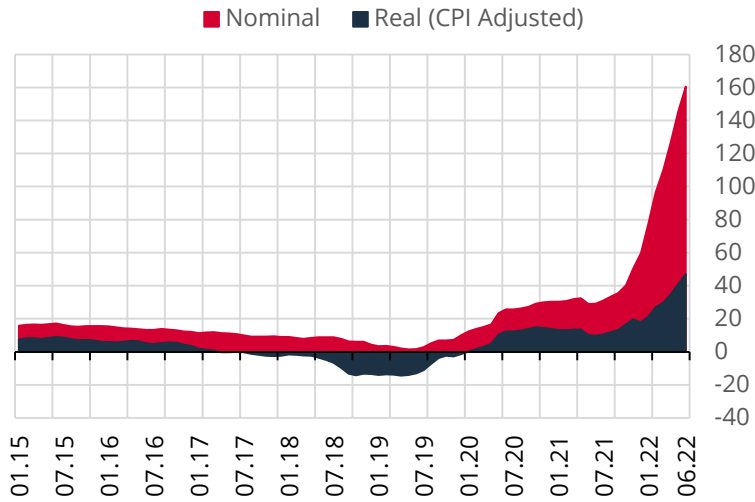
Figures in parentheses indicate annual percentage changes.

Residential Property Price Index has been published as part of the "Official Statistics Programme (OSP)".

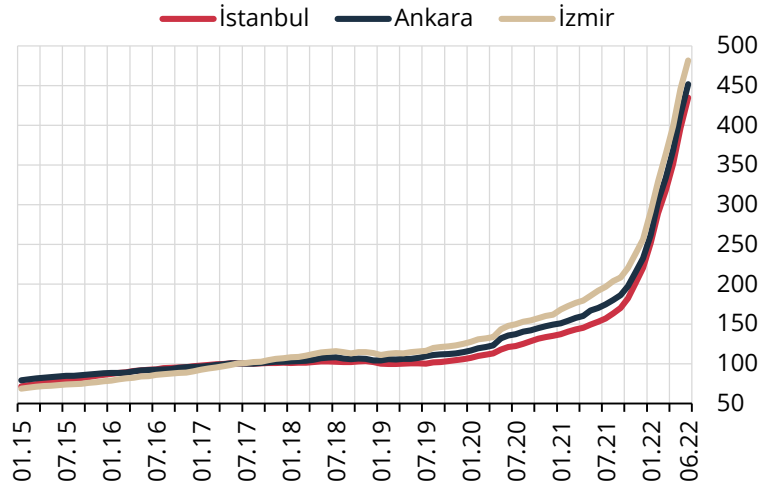
Real changes are calculated using the average of the annual rate of changes in CPI (%) of the reference month and the preceding and succeeding months, in order to comply with the data set used in the calculation.

Graph 1: Residential Property Price Index (Level, 2017=100)

The Residential Property Price Index (RPPI) (2017=100), which measures quality adjusted price changes of dwellings in Türkiye stands at **469.8** in June 2022 by a monthly increase of **9.0** percent.

Graph 2: Residential Property Price Index (Annual % Change)

The RPPI increased annually by **160.6** percent in nominal terms and by **47.0** percent in real terms.

Graph 3: Residential Property Price Index for Three Major Cities (Level, 2017=100)

In June 2022, the RPPI increased monthly by **9.7**, **9.3** and **8.1** percent in Istanbul, Ankara and İzmir respectively. Istanbul, Ankara and İzmir recorded an annual increase of **184.9**, **165.4** and **150.9** percent respectively.