



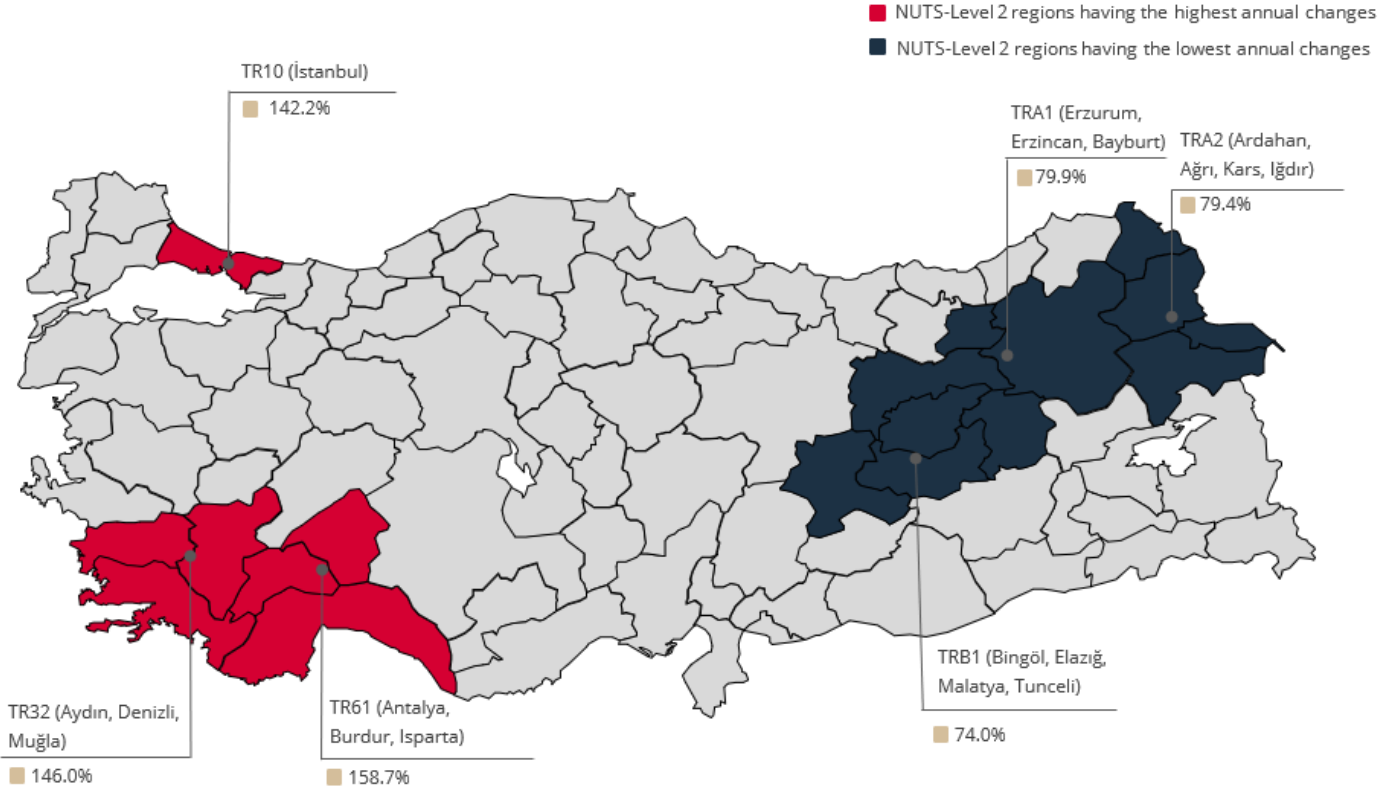
# RESIDENTIAL PROPERTY PRICE INDEX

DATA GOVERNANCE AND  
STATISTICS DEPARTMENT  
SURVEYS AND INDICES DIVISION

APRIL 2022

## Residential Property Price Index (RPPI)

In April 2022, RPPI increased monthly by **10.2** percent, recorded an annual increase of **127.0** percent in nominal terms and **34.9** percent in real terms.



**Table 1: Residential Property Price Indices (2017=100) and Unit Prices**

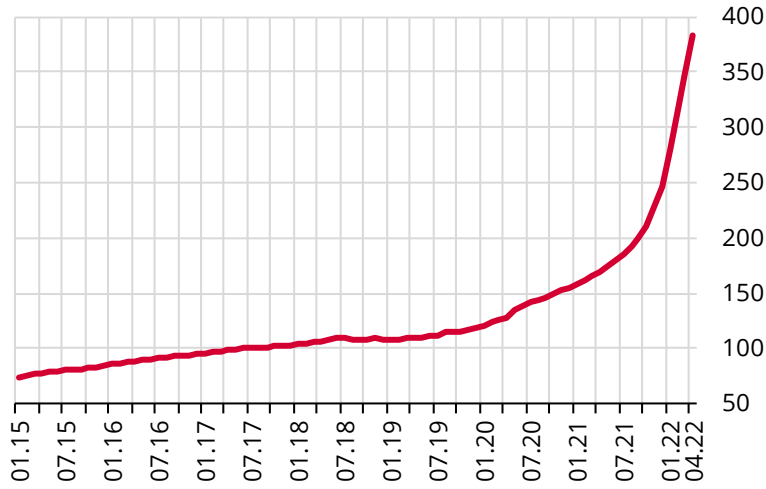
	Residential Property Price Index	Residential Property Price Index for New Dwellings	Residential Property Price Index for Existing Dwellings	Unit Prices (TL/m <sup>2</sup> )*
	383.1 (127.0%)	414.2 (131.1%)	377.8 (126.5%)	10574.9 ₺
	351.9 (142.2%)	394.6 (157.2%)	352.8 (144.3%)	17304.7 ₺
	369.2 (130.9%)	453.8 (147.0%)	362.0 (130.1%)	7555.4 ₺
	399.2 (122.6%)	430.7 (139.5%)	392.0 (117.8%)	12284.6 ₺

\*Square Meter Prices are constructed by using the **Stratified Median Price** method.

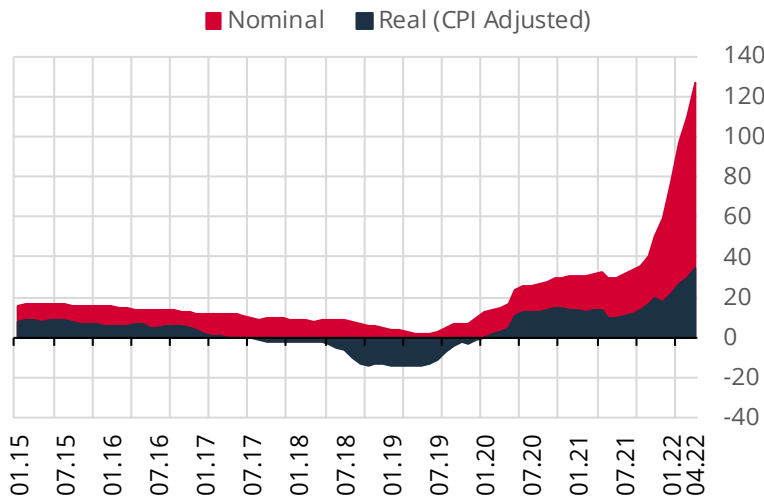
Figures in parentheses indicate annual percentage changes.

Residential Property Price Index has been published as part of the "Official Statistics Programme (OSP)".

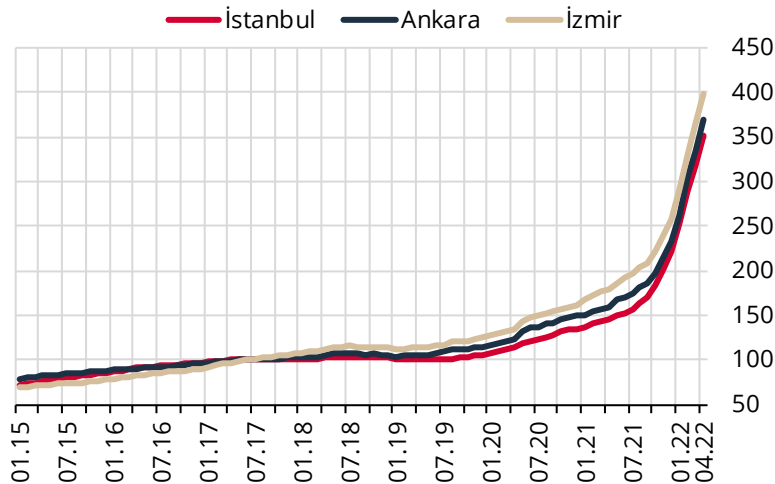
Real changes are calculated using the average of the annual rate of changes in CPI (%) of the reference month and the preceding and succeeding months, in order to comply with the data set used in the calculation.

**Graph 1: Residential Property Price Index (Level, 2017=100)**

The Residential Property Price Index (RPPI) (2017=100), which measures quality adjusted price changes of dwellings in Türkiye stands at **383.1** in April 2022 by a monthly increase of **10.2** percent.

**Graph 2: Residential Property Price Index (Annual % Change)**

The RPPI increased annually by **127.0** percent in nominal terms and by **34.9** percent in real terms.

**Graph 3: Residential Property Price Index for Three Major Cities (Level, 2017=100)**

In April 2022, the RPPI increased monthly by **10.7**, **10.6** and **9.7** percent in Istanbul, Ankara and Izmir respectively. Istanbul, Ankara and Izmir recorded an annual increase of **142.2**, **130.9** and **122.6** percent respectively.