



RESIDENTIAL PROPERTY PRICE INDEX

DATA GOVERNANCE AND
STATISTICS DEPARTMENT
SURVEYS AND INDICES DIVISION
NOVEMBER 2020

Residential Property Price Index (RPPI)

In November 2020, RPPI increased monthly by **1.5** percent, recorded an annual increase of **30.0** percent in nominal terms and **14.0** percent in real terms.

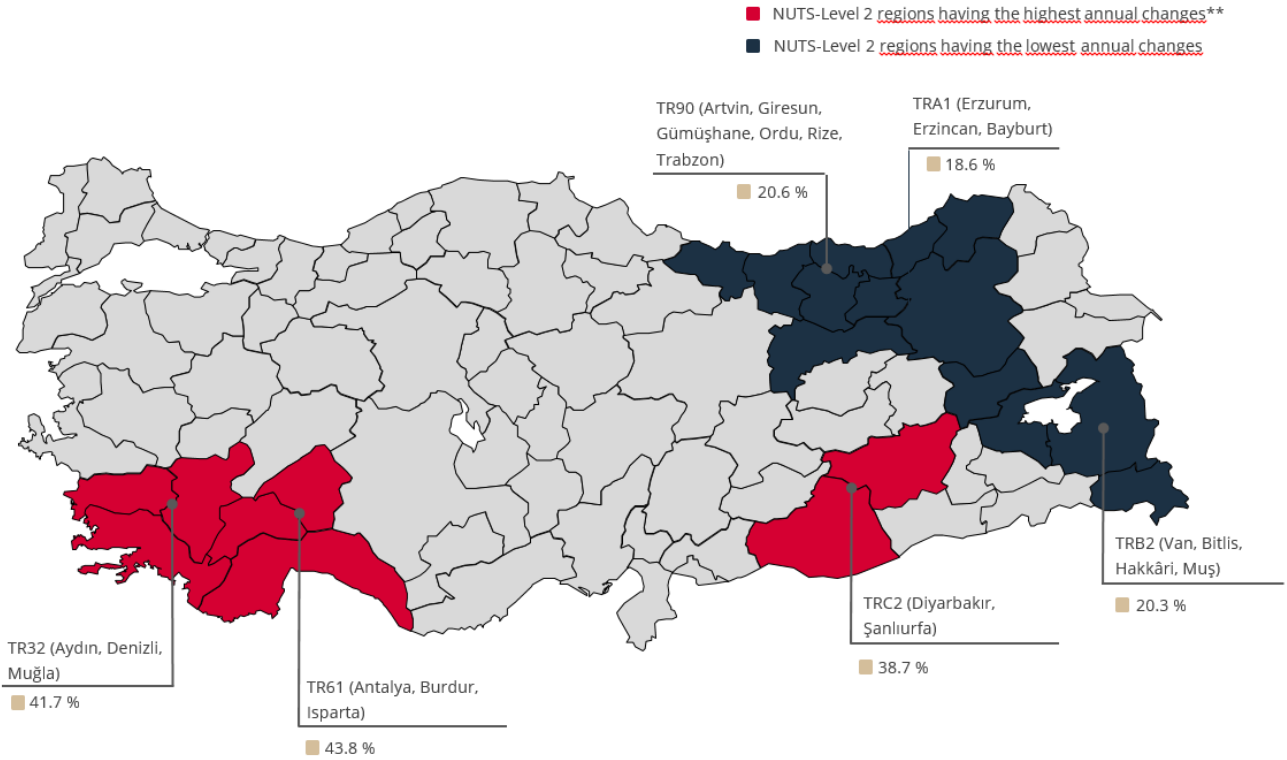
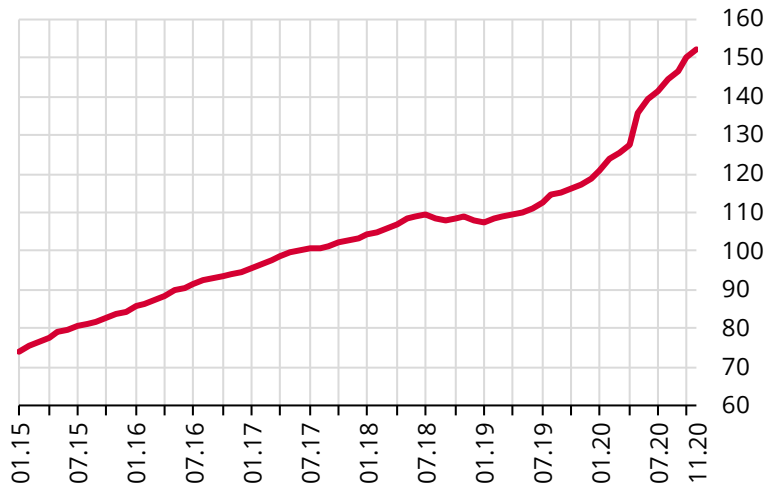


Table 1: Residential Property Price Indices and Unit Prices

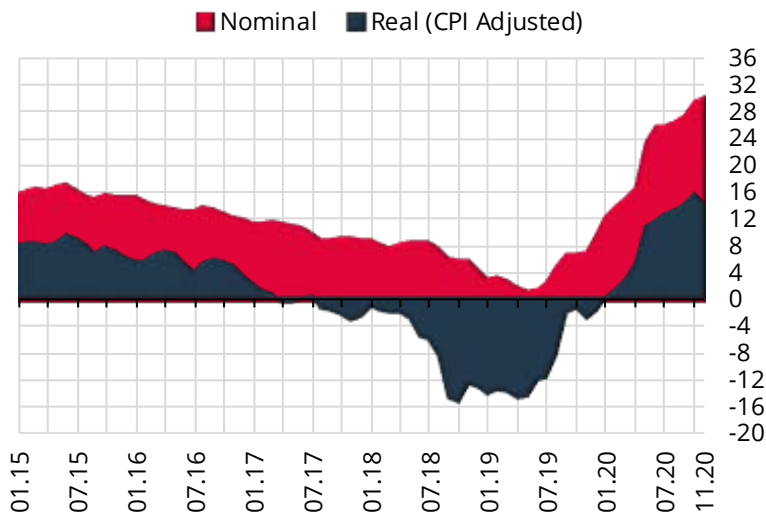
	Residential Property Price Index	Residential Property Price Index for New Dwellings	Residential Property Price Index for Existing Dwellings	Unit Prices (TL/m ²)*
	152.2 (30.0%)	157.5 (31.1%)	150.7 (29.4%)	3813.1 ₺
	133.6 (27.8%)	138.3 (29.1%)	133.3 (28.2%)	6388.5 ₺
	147.1 (30.1%)	167.7 (37.2%)	144.8 (29.1%)	2888.6 ₺
	159.8 (29.9%)	162.3 (31.8%)	160.1 (29.5%)	4357.4 ₺

*Square Meter Prices are constructed by using the **Stratified Median Price** method.

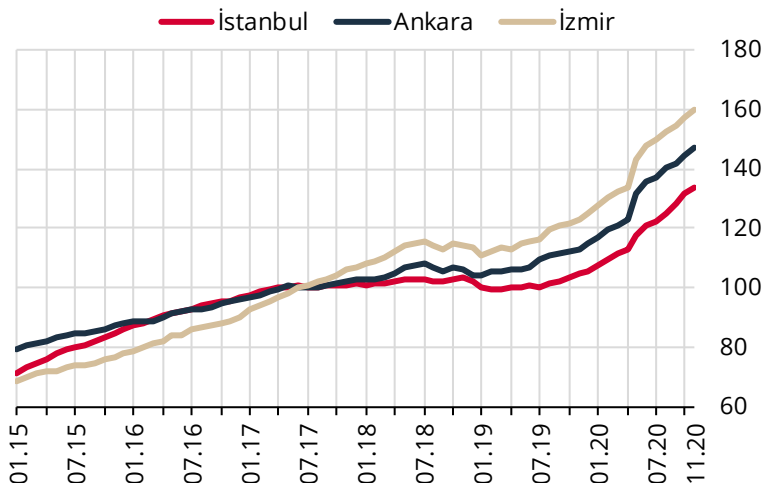
**Nomenclature of Territorial Units for Statistics (NUTS) Level 2 definitions are given in the Metadata note. Figures in parentheses indicate annual percentage changes.

Graph 1: Residential Property Price Index (Level, 2017=100)

The Residential Property Price Index (RPPI) (2017=100), which measures quality adjusted price changes of dwellings in Turkey stands at **152.2** in November 2020 by a monthly increase of **1.5** percent.

Graph 2: Residential Property Price Index (Annual % Change)

The RPPI increased annually by **30.0** percent in nominal terms and by **14.0** percent in real terms.

Graph 3: Residential Property Price Index for Three Major Cities (Level, 2017=100)

In November 2020, the RPPI increased monthly by **1.7** percent in all three major cities: Istanbul, Ankara and İzmir.

Istanbul, Ankara and İzmir recorded an annual increase of **27.8**, **30.1** and **29.9** percent respectively.