



RESIDENTIAL PROPERTY PRICE INDEX

DATA GOVERNANCE AND
STATISTICS DEPARTMENT
SURVEYS AND INDICES DIVISION

APRIL 2021

Residential Property Price Index (RPPI)

In April 2021, RPPI increased monthly by **2.0** percent, recorded an annual increase of **32.4** percent in nominal terms and **13.0** percent in real terms.

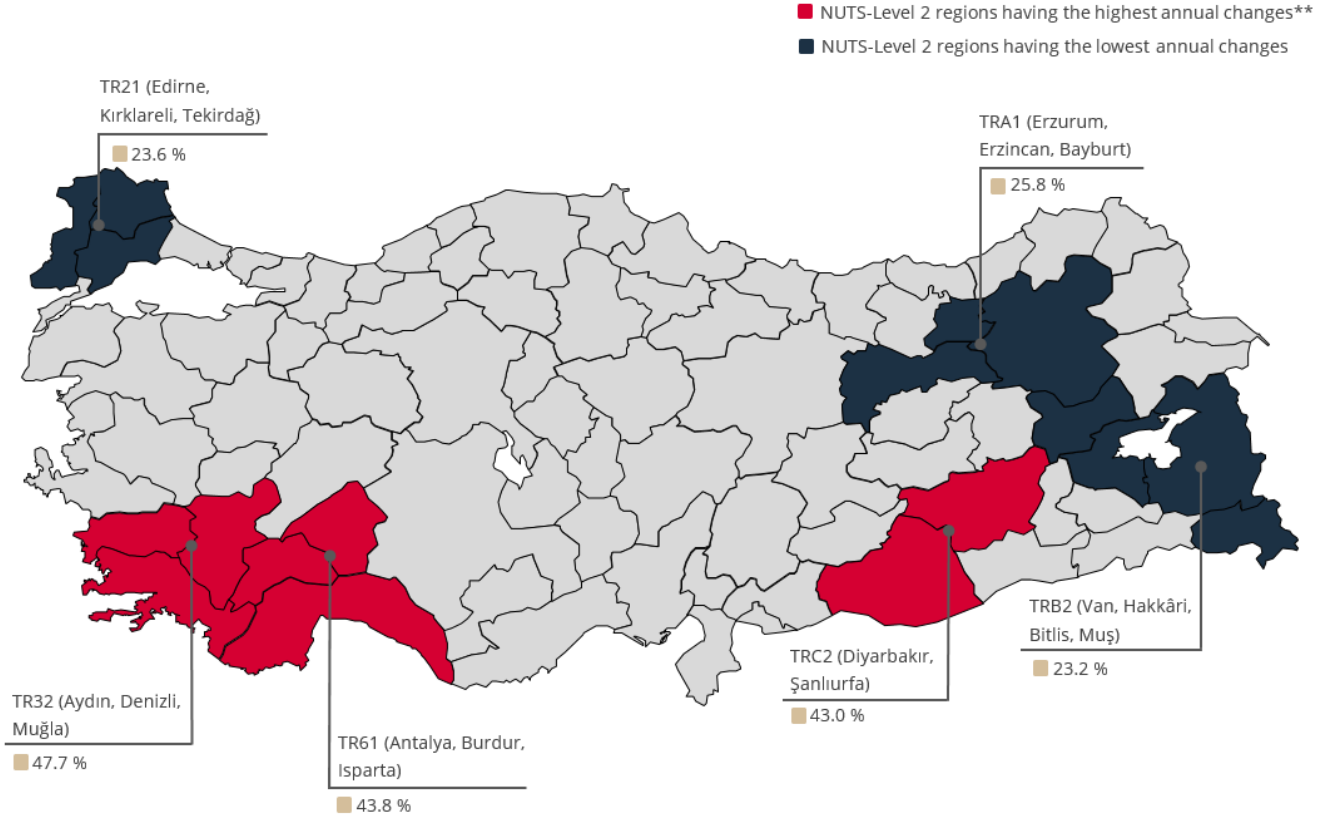
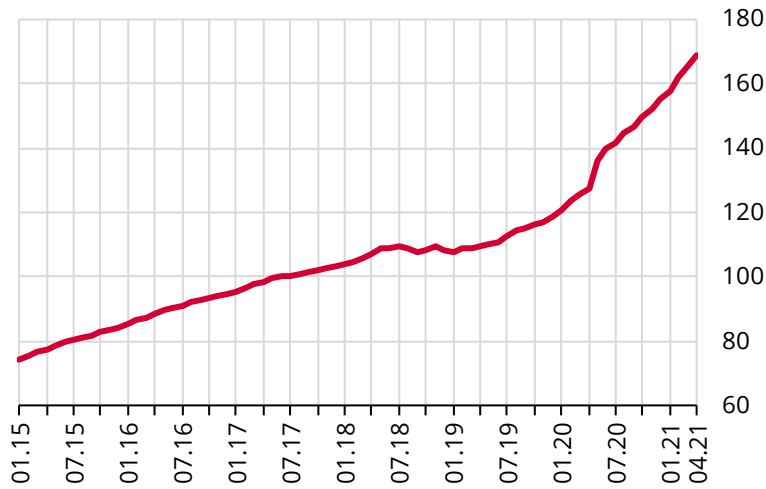


Table 1: Residential Property Price Indices (2017=100) and Unit Prices

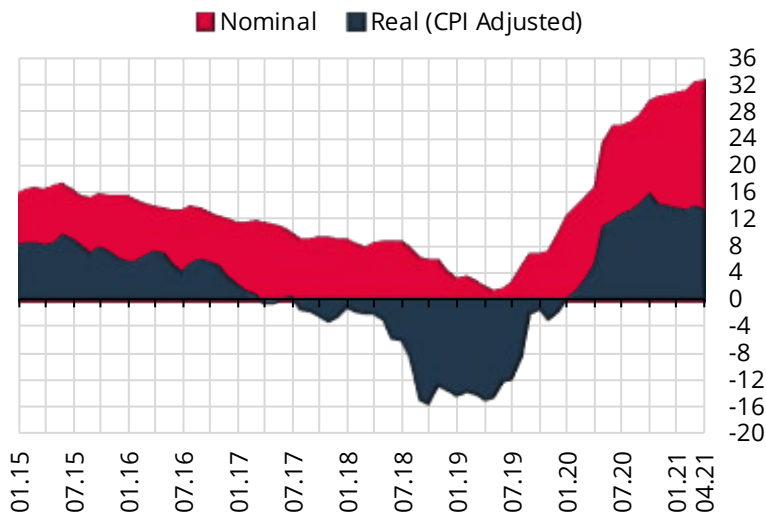
	Residential Property Price Index	Residential Property Price Index for New Dwellings	Residential Property Price Index for Existing Dwellings	Unit Prices (TL/m ²)*
	168.8 (32.4%)	179.1 (35.6%)	166.8 (31.6%)	4225.5 ₺
	145.4 (28.6%)	153.1 (30.5%)	144.5 (28.1%)	6520.9 ₺
	159.8 (29.8%)	183.4 (34.1%)	157.2 (28.7%)	3142.8 ₺
	179.3 (34.3%)	179.7 (31.7%)	180.0 (34.5%)	5109.2 ₺

*Square Meter Prices are constructed by using the **Stratified Median Price** method.

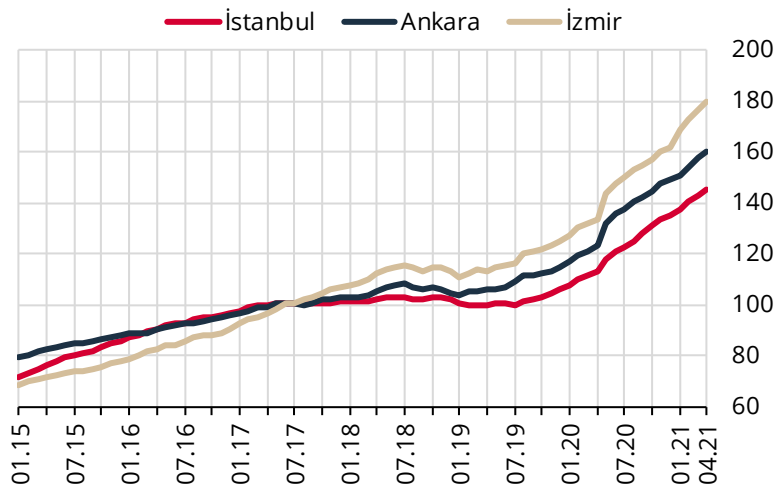
**Nomenclature of Territorial Units for Statistics (NUTS) Level 2 definitions are given in the Metadata note. Figures in parentheses indicate annual percentage changes.

Graph 1: Residential Property Price Index (Level, 2017=100)

The Residential Property Price Index (RPPI) (2017=100), which measures quality adjusted price changes of dwellings in Turkey stands at **168.8** in April 2021 by a monthly increase of **2.0** percent.

Graph 2: Residential Property Price Index (Annual % Change)

The RPPI increased annually by **32.4** percent in nominal terms and by **13.0** percent in real terms.

Graph 3: Residential Property Price Index for Three Major Cities (Level, 2017=100)

In April 2021, the RPPI increased monthly by **1.5**, **1.5** and **1.4** percent in Istanbul, Ankara and İzmir respectively. Istanbul, Ankara and İzmir recorded an annual increase of **28.6**, **29.8** and **34.3** percent respectively.